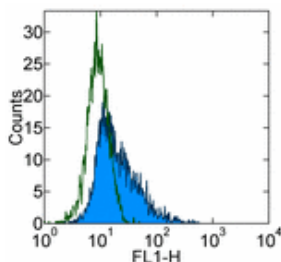


Anti-Human CD171 Purified

Catalog Number: 14-1719

Also Known As: Neural Cell Adhesion Molecule, L1, NCAM L1

RUO: For Research Use Only



Staining of Panc-1 cell line with 0.125 µg of Mouse IgG2a κ Isotype Control Purified (cat. 14-4724) (open histogram) or 0.125 µg of Anti-Human CD171 Purified (filled histogram). Total viable cells were used for analysis.

Product Information

Contents: Anti-Human CD171 Purified

REF Catalog Number: 14-1719

Clone: eBio5G3 (5G3)

Concentration: 0.5 mg/ml

Host/Isotype: Mouse IgG2a

Formulation: aqueous buffer, 0.09% sodium azide, may contain carrier protein/stabilizer



Temperature Limitation: Store at 2-8°C.



Batch Code: Refer to Vial



Use By: Refer to Vial



Caution, contains Azide

Description

The monoclonal antibody eBio5G3 recognizes CD171 also known as neural cell adhesion molecule L1. CD171 is a member of the Ig superfamily containing 6 extracellular Ig domains and five fibronectin type III-like repeats. CD171 has been shown to function as a cell adhesion molecule mediating homotypic and heterotypic cell-cell interactions in neuronal myelination, neurite outgrowth and regeneration. Expression of CD171 has been found on monocytes and mature monocytic-derived and follicular DCs, a minor subset of lymphocytes in addition to that found on neuronal tissue and some tumor cell lines. Expression of CD171 on tumors is thought to contribute to tumor progression. Epitope of eBio5G3 is in amino-terminal Ig-like domain.

Applications Reported

This eBio5G3 (5G3) antibody has been reported for use in flow cytometric analysis, immunoprecipitation, immunoblotting (WB) under nonreducing conditions, and immunohistology staining of frozen tissue sections.

Applications Tested

This eBio5G3 (5G3) antibody has been tested by flow cytometric of tumor cell line Panc-1. This can be used at less than or equal to 0.25 µg per test. A test is defined as the amount (µg) of antibody that will stain a cell sample in a final volume of 100 µL. Cell number should be determined empirically but can range from 10⁵ to 10⁸ cells/test. It is recommended that the antibody be carefully titrated for optimal performance in the assay of interest.

References

Balaian LB, Moehler T, Montgomery AM. The human neural cell adhesion molecule L1 functions as a costimulatory molecule in T cell activation. *Eur J Immunol.* 2000 Mar;30(3):938-43. (5G3, FA PubMed)

Pancook JD, Reisfeld RA, Varki N, Vitiello A, Fox RI, Montgomery AM. Expression and regulation of the neural cell adhesion molecule L1 on human cells of myelomonocytic and lymphoid origin. *J Immunol.* 1997 May 1;158(9):4413-21. (5G3, FC PubMed)

Related Products

11-4011 Anti-Mouse IgG FITC

11-4317 Streptavidin FITC

12-4317 Streptavidin PE

13-4013 Anti-Mouse IgG Biotin (Polyclonal)

14-4724 Mouse IgG2a K Isotype Control Purified

17-4317 Streptavidin APC

Not for further distribution without written consent.

Copyright © 2000-2010 eBioscience, Inc.

Tel: 888.999.1371 or 858.642.2058 • Fax: 858.642.2046 • www.eBioscience.com • info@eBioscience.com