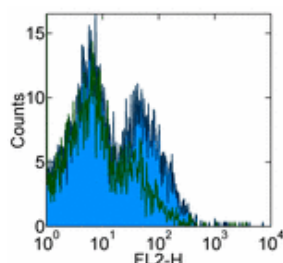


Anti-Mouse CD166 (ALCAM) Purified

Catalog Number: 14-1661

Also Known As: Activated Leucocyte Cell Adhesion Molecule

RUO: For Research Use Only



Staining of C57BL/6 splenocytes with 0.125 µg of Rat IgG2a κ Isotype Control Purified (cat. 14-4321) (open histogram) or 0.125 µg of Anti-Mouse CD166 (ALCAM) Purified (filled histogram) followed by Anti-Rat IgG Biotin (cat. 13-4813) and Streptavidin PE (cat. 12-4317). Cells in the lymphocyte gate were used for analysis.

Product Information

Contents: Anti-Mouse CD166 (ALCAM) Purified

REF Catalog Number: 14-1661

Clone: eBioALC48

Concentration: 0.5 mg/ml

Host/Isotype: Rat IgG2a, κ

Formulation: aqueous buffer, 0.09% sodium azide, may contain carrier protein/stabilizer



Temperature Limitation: Store at 2-8°C.



Batch Code: Refer to Vial



Use By: Refer to Vial



Caution, contains Azide

Description

Activated leukocyte cell adhesion molecule (ALCAM; CD166) is a 105 kD cell-surface adhesion molecule belonging to the Ig superfamily of receptors. ALCAM is a type I transmembrane glycoprotein, possessing five extracellular Ig domains, a transmembrane domain, and a short cytoplasmic tail. ALCAM is involved in homotypic adhesion, as well as heterotypic adhesion with its natural ligand, CD6. A soluble isoform of ALCAM has been shown to inhibit homophilic adhesive interactions. ALCAM is expressed on a variety of cell types, including activated T and B cells, monocyte-derived dendritic cells, and thymic epithelial cells. ALCAM expression has also been used as a marker for the isolation of pluripotent stem cells.

Applications Reported

This eBioALC-48 antibody has been reported for use in flow cytometric analysis and immunohistochemistry on paraffin-embedded tissue sections.

Applications Tested

The eBioALC-48 antibody has been tested by flow cytometric analysis of mouse splenocyte suspensions. This can be used at less than or equal to 0.25 µg per test. A test is defined as the amount (µg) of antibody that will stain a cell sample in a final volume of 100 µL. Cell number should be determined empirically but can range from 10⁵ to 10⁸ cells/test. It is recommended that the antibody be carefully titrated for optimal performance in the assay of interest.

References

Zimmerman AW, Joosten B, Torensma R, Parnes JR, van Leeuwen FN, Figdor CG. Long-term engagement of CD6 and ALCAM is essential for T-cell proliferation induced by dendritic cells. *Blood*. 2006 Apr 15;107(8):3212-20. (PubMed)

Swart GW, Lunter PC, Kilsdonk JW, Kempen LC. Activated leukocyte cell adhesion molecule (ALCAM/CD166): signaling at the divide of melanoma cell clustering and cell migration? *Cancer Metastasis Rev*. 2005 Jun;24(2):223-36. (PubMed)

van Kempen LC, Nelissen JM, Degen WG, Torensma R, Weidle UH, Bloemers HP, Figdor CG, Swart GW. Molecular basis for the homophilic activated leukocyte cell adhesion molecule (ALCAM)-ALCAM interaction. *J Biol Chem*. 2001 Jul 13;276(28):25783-90. (PubMed)

Bowen MA, Aruffo AA, Bajorath J. Cell surface receptors and their ligands: in vitro analysis of CD6-CD166 interactions. *Proteins*. 2000 Aug 15;40(3):420-8. (PubMed)

Related Products

14-4321 Rat IgG2a K Isotype Control Purified

Not for further distribution without written consent.

Copyright © 2000-2010 eBioscience, Inc.

Tel: 888.999.1371 or 858.642.2058 • Fax: 858.642.2046 • www.eBioscience.com • info@eBioscience.com