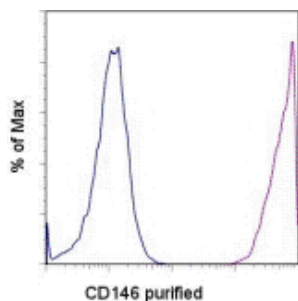


Anti-CD146 Purified

Catalog Number: 14-1469

Also Known As: Melanoma Cell Adhesion Molecule, MUC18, Mel-CAM, EndoCAM

RUO: For Research Use Only. Not for use in diagnostic procedures.



Staining of Human Umbilical Vein Endothelial Cells (HUVEC) with 0.125 ug of Mouse IgG1 K Isotype Control Purified (cat. 14-4714) (blue histogram) or 0.125 ug of Anti-CD146 Purified (purple histogram) followed by F(ab')₂ Anti-Mouse IgG PE (cat. 12-4012). Total viable cells were used for analysis.

Product Information

Contents: Anti-CD146 Purified

REF **Catalog Number:** 14-1469

Clone: P1H12

Concentration: 0.5 mg/mL

Host/Isotype: Mouse IgG1, kappa

Formulation: aqueous buffer, 0.09% sodium azide, may contain carrier protein/stabilizer



Temperature Limitation: Store at 2-8°C.



Batch Code: Refer to Vial



Use By: Refer to Vial

Description

The monoclonal antibody P1H12 recognizes CD146 also known as MUC18, s-endo, Endo-CAM and Mel-CAM, which is a member of the Ig superfamily of proteins. The expression of CD146 is found on endothelial cells, bone marrow fibroblasts and some tumors (especially melanoma). Recently mesenchymal stromal cells and endometrial stromal cells have also been shown to express CD146. The presence of CD146 on circulating blood cells have been confined to a subset of T cells rather than circulating endothelial cells, as expression of other endothelial markers (CD31 and CD51/61) is negative. Expression can be found on activated lymphocytes. The protein is heavily glycosylated with more than 50% of the mass from carbohydrates.

The antibody P1H12 has been reported to crossreact to mouse, rabbit, canine, but not rat.

Applications Reported

This P1H12 antibody has been reported for use in flow cytometric analysis, immunoprecipitation, immunoblotting (WB) under nonreducing conditions, and immunohistology staining of frozen tissue sections.

Applications Tested

This P1H12 antibody has been tested by flow cytometric analysis of HUVEC cell line. This can be used at less than or equal to 0.25 µg per test. A test is defined as the amount (µg) of antibody that will stain a cell sample in a final volume of 100 µL. Cell number should be determined empirically but can range from 10⁵ to 10⁸ cells/test. It is recommended that the antibody be carefully titrated for optimal performance in the assay of interest.

References

Lamerato-Kozicki AR, Helm KM, Jubala CM, Cutter GC, Modiano JF. Canine hemangiosarcoma originates from hematopoietic precursors with potential for endothelial differentiation. *Exp Hematol.* 2006 Jul;34(7):870-8. (P1H12, canine cross-reactivity, PubMed)

Elshal MF, Khan SS, Takahashi Y, Solomon MA, McCoy JP Jr. CD146 (Mel-CAM), an adhesion marker of endothelial cells, is a novel marker of lymphocyte subset activation in normal peripheral blood. *Blood.* 2005 Oct 15;106(8):2923-4 (P1H12, FC, PubMed)

Solovey AN, Gui L, Chang L, Enenstein J, Browne PV, Hebbel RP. Identification and functional assessment of endothelial P1H12. *J Lab Clin Med.* 2001 Nov;138(5):322-31. (P1H12, FC, PubMed)

Solovey A, Lin Y, Browne P, Choong S, Wayner E, Hebbel RP. Circulating activated endothelial cells in sickle cell anemia. *N Engl J Med.* 1997 Nov 27;337(22):1584-90. (P1H12, FC PubMed)

Related Products

11-4011 Anti-Mouse IgG FITC

12-4012 F(ab')₂ Anti-Mouse IgG PE (Discontinued. Please Refer to alternative clone; cat. 12-4010) (polyclonal)

Not for further distribution without written consent.

Copyright © 2000-2012 eBioscience, Inc.

Tel: 888.999.1371 or 858.642.2058 • Fax: 858.642.2046 • www.eBioscience.com • info@eBioscience.com