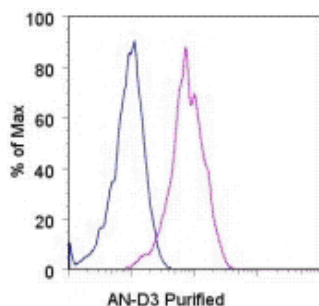


Anti-Human Ciliary Neurotrophic Factor Receptor alpha Purified

Catalog Number: 14-1304

Also Known As: CNTFRa, CNTF Receptor alpha, CNTF Ra

RUO: For Research Use Only. Not for use in diagnostic procedures.



Staining of the IMR-32 cell line with 0.5 ug of Mouse IgG2a K Isotype Control Purified (cat. 14-4724) (blue histogram) or 0.5 ug of Anti-Human Ciliary Neurotrophic Factor Receptor alpha Purified (purple histogram) followed by F(ab')₂ Anti-Mouse IgG PE (cat. 12-4012). Total viable cells were used for analysis.

Product Information

Contents: Anti-Human Ciliary Neurotrophic Factor Receptor alpha Purified

Formulation: aqueous buffer, 0.09% sodium azide, may contain carrier protein/stabilizer

REF **Catalog Number:** 14-1304

Temperature Limitation: Store at 2-8°C.

Clone: AN-D3

LOT **Batch Code:** Refer to Vial

Concentration: 0.5 mg/mL

Use By: Refer to Vial

Host/Isotype: Mouse IgG2a, kappa

Description

This AN-D3 monoclonal antibody reacts with human ciliary neurotrophic factor receptor alpha (CNTFR alpha). CNTFR alpha expression is primarily localized to the nervous system and skeletal muscle. Together with gp130 and LIFR beta, this molecule forms the tripartite CNTF receptor complex. These receptor components remain unassociated until CNTF binds CNTFR alpha, which leads to their recruitment. Subsequent activation of the JAK-STAT pathway leads to changes in gene expression that affect cell survival and differentiation. More recently, another cytokine, neuropoietin, has been shown to bind the CNTFR receptor complex to promote nervous system development.

The AN-D3 antibody recognizes CNTFR alpha when it is dissociated from the tripartite complex.

Applications Reported

This AN-D3 antibody has been reported for use in flow cytometric analysis and immunoprecipitation.

Applications Tested

This AN-D3 antibody has been tested by flow cytometric analysis of the IMR-32 cell line. This can be used at less than or equal to 1 µg per test. A test is defined as the amount (µg) of antibody that will stain a cell sample in a final volume of 100 µL. Cell number should be determined empirically but can range from 10⁵ to 10⁸ cells/test. It is recommended that the antibody be carefully titrated for optimal performance in the assay of interest.

References

Derouet D, Rousseau F, Alfonsi F, Froger J, Hermann J, Barbier F, Perret D, Diveu C, Guillet C, Preisser L, Dumont A, Barbado M, Morel A, deLapeyriere O, Gascan H, and Chevalier S. Neuropoietin, a new IL-6-related cytokine signaling through the ciliary neurotrophic factor receptor. PNAS 2004 Apr;101(14):4827-32. (**AN-D3**, IP, Pubmed)

Sleeman MW, Anderson KD, Lambert PD, Yancopoulos GD, Wiegand SJ. The ciliary neurotrophic factor and its receptor, CNTFR alpha. Pharm Acta Helv. 2000 Mar;74(2-3):265-72.

Stahl N, Yancopoulos GD. The tripartite CNTF receptor complex: activation and signaling involves components shared with other cytokines. J Neurobiol. 1994 Nov;25(11):1454-66. Review.

Related Products

12-4012 F(ab')₂ Anti-Mouse IgG PE (polyclonal)

14-4724 Mouse IgG2a K Isotype Control Purified

Not for further distribution without written consent.

Copyright © 2000-2010 eBioscience, Inc.

Tel: 888.999.1371 or 858.642.2058 • Fax: 858.642.2046 • www.eBioscience.com • info@eBioscience.com