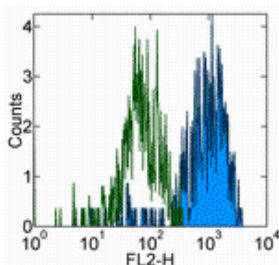


Anti-Human CD115 (c-fms) Purified

Catalog Number: 14-1159

Also Known As: CSF1R, colony-stimulating factor 1 Receptor

RUO: For Research Use Only. Not for use in diagnostic procedures.



Staining of normal human peripheral blood cells with 0.5 ug of Rat IgG2a K Isotype Control Purified (cat. 14-4321) (open histogram) or 0.5 ug of Anti-Human CD115 (c-fms) Purified (filled histogram) followed by Anti-Rat IgG Biotin (cat. 13-4813) and Streptavidin PE (cat. 12-4317). Cells in the monocyte gate were used for analysis.

Product Information

Contents: Anti-Human CD115 (c-fms) Purified

REF **Catalog Number:** 14-1159

Clone: 12-3A3-1B10

Concentration: 0.5 mg/mL

Host/Isotype: Rat IgG2a, kappa

Formulation: aqueous buffer, 0.09% sodium azide, may contain carrier protein/stabilizer



Temperature Limitation: Store at 2-8°C.



Batch Code: Refer to Vial



Use By: Refer to Vial



Contains sodium azide

Description

CD115 or Colony-Stimulating Factor-1 Receptor (CSF-1R) is expressed on cells committed to the monocyte lineage and osteoclasts. CSF-1R is a disulfide-linked homodimer, which upon binding of its ligand, CSF-1, undergoes tyrosine autophosphorylation and subsequently, phosphorylates other membrane-proximal downstream targets which results in cytoskeletal remodeling, gene transcription and protein translation. CSF-1R activation promotes the survival, proliferation and differentiation of mononuclear phagocytes and the spreading and motility of macrophages. In osteoclasts, CSF-1R synergizes with RANKL to regulate the differentiation of mononuclear phagocytes to osteoclasts.

Applications Reported

This 12-3A3-1B10 antibody has been reported for use in flow cytometric analysis, immunoprecipitation, immunoblotting (WB), and immunohistochemical staining.

Applications Tested

This 12-3A3-1B10 antibody has been tested by flow cytometric analysis of normal human peripheral blood cells. This can be used at less than or equal to 1 µg per test. A test is defined as the amount (µg) of antibody that will stain a cell sample in a final volume of 100 µL. Cell number should be determined empirically but can range from 10⁵ to 10⁸ cells/test. It is recommended that the antibody be carefully titrated for optimal performance in the assay of interest.

References

Pixley FJ, Stanley ER. CSF-1 regulation of the wandering macrophage: complexity in action. Trends Cell Biol. 2004 Nov;14(11):628-38. Review.

Ashmun RA, Look AT, Roberts WM, Roussel MF, Seremetis S, Ohtsuka M, Sherr CJ. Monoclonal antibodies to the human CSF-1 receptor (c-fms proto-oncogene product) detect epitopes on normal mononuclear phagocytes and on human myeloid leukemic blast cells. Blood. 1989 Feb 15;73(3):827-37. (12-3A3-1B10, FC, PubMed)

Related Products

11-4811 Anti-Rat IgG FITC

12-4317 Streptavidin PE

13-4813 Anti-Rat IgG Biotin (Polyclonal)

14-4321 Rat IgG2a K Isotype Control Purified (eBR2a)

17-4317 Streptavidin APC

