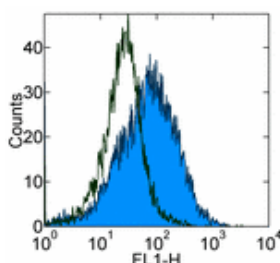


## Anti-Mouse CD105 (Endoglin) Purified

Catalog Number: 14-1051

Also Known As:

RUO: For Research Use Only



Staining of bEnd.3 cell line with 0.25 µg of Rat IgG2a κ Isotype Control Purified (cat. 14-4321) (open histogram) or 0.25 µg of Anti-Mouse CD105 (Endoglin) Purified (filled histogram) followed by Anti-Rat IgG FITC (cat. 11-4811). Total viable cells were used for analysis.

### Product Information

Contents: Anti-Mouse CD105 (Endoglin) Purified


**REF** Catalog Number: 14-1051

Clone: MJ7/18

Concentration: 0.5 mg/ml


Host/Isotype: Rat IgG2a, κ

Formulation: aqueous buffer, 0.09% sodium azide, may contain carrier protein/stabilizer

 Temperature Limitation: Store at 2-8°C.

**LOT** Batch Code: Refer to Vial

 Use By: Refer to Vial

 Caution, contains Azide

### Description

The MJ7/18 monoclonal antibody reacts with the mouse CD105 molecule, also known as Endoglin. This 90 kDa disulfide-linked homodimer is expressed by vascular endothelial cells. It is suggested that CD105 functions in adhesion and embryonic angiogenesis.

### Applications Reported

The MJ7/18 antibody has been reported for use in flow cytometric analysis, immunoprecipitation, immunoblotting (WB), and immunohistochemical staining of frozen tissue sections.

### Applications Tested

The MJ7/18 antibody has been tested by flow cytometric analysis of mouse brain-derived endothelial (bEnd3) cells and splenocytes. This can be used at less than or equal to 0.5 µg per test. A test is defined as the amount (µg) of antibody that will stain a cell sample in a final volume of 100 µL. Cell number should be determined empirically but can range from 10<sup>5</sup> to 10<sup>8</sup> cells/test. It is recommended that the antibody be carefully titrated for optimal performance in the assay of interest.

### References

Ge, A. Z. and E. C. Butcher. 1994. Cloning and expression of a cDNA encoding mouse endoglin, an endothelial cell TGF-beta ligand. *Gene* 138(1-2): 201-6.

Tokita D, Ohdan H, Onoe T, Hara H, Tanaka Y, Asahara T. Liver sinusoidal endothelial cells contribute to alloreactive T-cell tolerance induced by portal venous injection of donor splenocytes. *Transpl Int.* 2005 Feb;18(2):237-45.

Quintanilla M, Ramirez JR, et al. 2003. Expression of the TGF-beta coreceptor endoglin in epidermal keratinocytes and its dual role in multistage mouse skin carcinogenesis. *Oncogene.* 22(38):5976-85. (MJ7/18, IHC formalin-fixed and WB, PubMed)

Onoe T, Ohdan H, et al. 2005. Liver sinusoidal endothelial cells tolerize T cells across MHC barriers in mice. *J Immunol.* 175(1):139-46. (MJ7/18, IHC frozen, PubMed)

Korpanty G, Carbon JG, et al. 2007. Monitoring response to anticancer therapy by targeting microbubbles to tumor vasculature. *Clin Cancer Res.* 13(1):323-30. (MJ7/18, IHC frozen, PubMed)

Perez-Gomez E, Villa-Morales M, et al. 2007. A role for endoglin as a suppressor of malignancy during mouse skin carcinogenesis. *Cancer Res.* 67(21):10268-77. (MJ7/18, WB, PubMed)

### Related Products

11-4317 Streptavidin FITC  
11-4811 Anti-Rat IgG FITC  
12-4317 Streptavidin PE  
13-4813 Anti-Rat IgG Biotin (Polyclonal)  
14-4321 Rat IgG2a K Isotype Control Purified  
17-4317 Streptavidin APC

---

Not for further distribution without written consent.

Copyright © 2000-2010 eBioscience, Inc.

Tel: 888.999.1371 or 858.642.2058 • Fax: 858.642.2046 • [www.eBioscience.com](http://www.eBioscience.com) • [info@eBioscience.com](mailto:info@eBioscience.com)