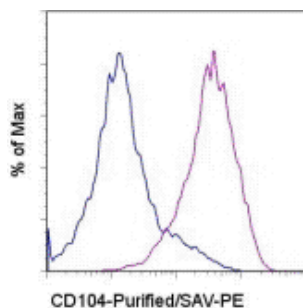


## Anti-Human CD104 (Integrin beta 4) Purified

Catalog Number: 14-1049

Also Known As: Integrin b4, ITGB4

RUO: For Research Use Only. Not for use in diagnostic procedures.



Staining of the A549 cell line with 0.5 ug of Rat IgG2b K Isotype Control Purified (cat. 14-4031) (open histogram) or 0.5 ug of Anti-Human CD104 (Integrin beta 4) Purified (filled histogram) followed by Anti-Rat IgG Biotin (cat. 13-4813) and Streptavidin PE (cat. 12-4317). Total viable cells were used for analysis.

### Product Information

Contents: Anti-Human CD104 (Integrin beta 4) Purified


REF Catalog Number: 14-1049

Clone: 439-9B


Concentration: 0.5 mg/mL

Host/Isotype: Rat IgG2b

Formulation: aqueous buffer, 0.09% sodium azide, may contain carrier protein/stabilizer

 Temperature Limitation: Store at 2-8°C.

LOT Batch Code: Refer to Vial

 Use By: Refer to Vial

 Contains sodium azide

### Description

The monoclonal antibody 439-9B recognizes human CD104, also known as integrin beta 4. CD104 is a 202 kDa subunit that associates with integrin alpha 6 (CD49f), thereby forming the laminin receptor. Multiple splice variants have been identified. Expression is found on epithelial cells and tumor cells and has been shown to be involved in cell-matrix and cell-cell interactions. The role of CD104 in tumorigenicity is well established. The monoclonal antibody 439-9B has been reported to have no effect on adhesion of human colon adenocarcinoma cells. Moreover, this antibody crossreacts to bovine.

### Applications Reported

This 439-9B antibody has been reported for use in flow cytometric analysis, immunoprecipitation, immunoblotting under nonreducing conditions only, immunohistology staining of frozen tissue sections, and immunohistology staining of paraffin embedded tissue sections.

### Applications Tested

This 439-9B antibody has been tested by flow cytometric analysis of A549 cell line. This can be used at less than or equal to 1 µg per test. A test is defined as the amount (µg) of antibody that will stain a cell sample in a final volume of 100 µL. Cell number should be determined empirically but can range from 10<sup>5</sup> to 10<sup>8</sup> cells/test. It is recommended that the antibody be carefully titrated for optimal performance in the assay of interest.

### References

Simon-Assmann P, Leberquier C, Molto N, Uezato T, Bouziges F, Kedinger M. Adhesive properties and integrin expression profiles of two colonic cancer populations differing by their spreading on laminin. *J Cell Sci.* 1994 Mar;107 ( Pt 3):577-87.(439-9B, IP, PubMed)

Falcioni R, Sacchi A, Resau J, Kennel SJ. Monoclonal antibody to human carcinoma-associated protein complex: quantitation in normal and tumor tissue. *Cancer Res.* 1988 Feb 15;48(4):816-21. (439-9B, IP, WB, PubMed)

### Related Products

12-4317 Streptavidin PE

13-4813 Anti-Rat IgG Biotin (Polyclonal)

14-4031 Rat IgG2b K Isotype Control Purified

