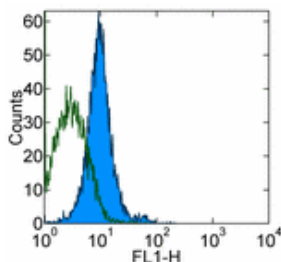


Anti-Mouse CD98 Purified

Catalog Number: 14-0981

Also Known As: 4F2, Ly-10

RUO: For Research Use Only



Staining of BALB/c splenocytes with 0.125 µg of Rat IgG2a κ Isotype Control Purified (cat. 14-4321) (open histogram) or 0.125 µg of Anti-Mouse CD98 Purified (filled histogram) followed by Anti-Rat IgG FITC (cat. 11-4811). Total viable cells were used for analysis.

Product Information

Contents: Anti-Mouse CD98 Purified

REF Catalog Number: 14-0981

Clone: RL388

Concentration: 0.5 mg/ml

Host/Isotype: Rat IgG2a, κ

Formulation: aqueous buffer, 0.09% sodium azide, may contain carrier protein/stabilizer



Temperature Limitation: Store at 2-8°C.



Batch Code: Refer to Vial



Use By: Refer to Vial



Caution, contains Azide

Description

The RL388 monoclonal antibody reacts with mouse CD98, also known as 4F2 antigen and Ly-10. RL388 detects a disulfide-linked heterodimer complex (130 kDa) composed of a glycosylated heavy (86 kDa) and a nonglycosylated light (39 kDa) subunits. CD98 is expressed on the surface of activated lymphocytes and is involved in cell activation and calcium flux events.

Applications Reported

The RL388 antibody has been reported for use in flow cytometric analysis, and immunoprecipitation.

Applications Tested

The RL388 antibody has been tested by flow cytometric analysis of activated and resting mouse splenocyte cell suspensions. This can be used at less than or equal to 0.25 µg per test. A test is defined as the amount (µg) of antibody that will stain a cell sample in a final volume of 100 µL. Cell number should be determined empirically but can range from 10⁵ to 10⁸ cells/test. It is recommended that the antibody be carefully titrated for optimal performance in the assay of interest.

References

MacDonald HR, Lees RK, Bron C. 1985. Cell surface glycoproteins involved in the stimulation of interleukin 1-dependent interleukin 2 production by a subline of EL4 thymoma cells. I. Functional characterization by monoclonal antibodies. *J Immunol.* 135(6):3944-50.
 Luscher B, Rousseaux M, Lees R, MacDonald HR, Bron C. 1985. Cell surface glycoproteins involved in the stimulation of interleukin 1-dependent interleukin 2 production by a subline of EL4 thymoma cells. II. Structure, biosynthesis, and maturation. *J. Immunol.* 135(6):3951-7.

Related Products

11-4317 Streptavidin FITC

11-4811 Anti-Rat IgG FITC

12-4317 Streptavidin PE

13-4813 Anti-Rat IgG Biotin (Polyclonal)

14-4321 Rat IgG2a K Isotype Control Purified

17-4317 Streptavidin APC

