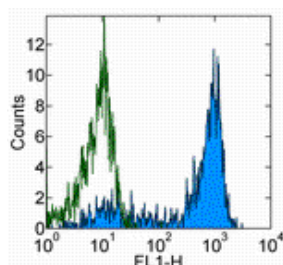


## Anti-Human CD62L (L-Selectin) Purified

**Catalog Number:** 14-0629

**Also Known As:** LECAM-1, Leu-8

**RUO: For Research Use Only. Not for use in diagnostic procedures.**



Staining of normal human peripheral blood cells with 0.5 ug of Mouse IgG1 kappa Isotype Control Purified (cat. 14-4714) (open histogram) or 0.5 ug of Anti-Human CD62P (P-Selectin) Purified (filled histogram) followed by Anti-Mouse IgG FITC (cat. 11-4011). Cells in the lymphocyte gate were used for analysis.

### Product Information

**Contents:** Anti-Human CD62L (L-Selectin) Purified

**REF** **Catalog Number:** 14-0629

**Clone:** DREG-56 (DREG56)

**Concentration:** 0.5 mg/mL

**Host/Isotype:** Mouse IgG1, kappa

**HLDA Workshop:** V S056

**Formulation:** aqueous buffer, 0.09% sodium azide, may contain carrier protein/stabilizer



**Temperature Limitation:** Store at 2-8°C.



**Batch Code:** Refer to Vial



**Use By:** Refer to Vial



**Caution, contains Azide**

### Description

The DREG-56 monoclonal antibody reacts with human CD62L, a 76 kDa member of the selectin family. CD62L is expressed by neutrophils, monocytes, and subsets of T, B, and NK cells and binds a number of glycosylated, fucosylated, sulfated sialylated glycoproteins including CD34, glycamin-1 and MAdCAM-1. These interactions mediate rolling of lymphocytes on activated endothelium at the sites of inflammation and homing of cells to the high endothelial venules (HEV) of peripheral lymphoid tissues.

### Applications Reported

This DREG-56 (DREG56) antibody has been reported for use in flow cytometric analysis, non-reducing conditions-immunoblotting (WB), and immunohistology staining of frozen tissue sections. DREG-56 has also been reported in inhibition of binding to HEV. (Please use Functional Grade purified DREG-56 (DREG56), cat. 16-0629, in functional assays.)

### Applications Tested

The DREG-56 (DREG56) antibody has been tested by flow cytometric analysis of human peripheral blood leukocytes. This can be used at less than or equal to 1 µg per test. A test is defined as the amount (µg) of antibody that will stain a cell sample in a final volume of 100 µL. Cell number should be determined empirically but can range from 10<sup>5</sup> to 10<sup>8</sup> cells/test. It is recommended that the antibody be carefully titrated for optimal performance in the assay of interest.

### References

Jutila MA, Kurk S, Jackiw L, Knibbs RN, Stoolman LM. J Immunol. L-selectin serves as an E-selectin ligand on cultured human T lymphoblasts. 2002 Aug 15;169(4):1768-73. (**Dreg-56**, WB, PubMed)

Schlossman, S., L. Bloumsell, et al. eds. 1995. Leucocyte Typing V: White Cell Differentiation Antigens. Oxford University Press. New York.

Kishimoto TK, Jutila MA, Butcher EC. Identification of a human peripheral lymph node homing receptor: a rapidly down-regulated adhesion molecule. Proc Natl Acad Sci U S A. 1990 Mar;87(6):2244-8. (**Dreg-56**, mAb generation, WB, FC, PubMed)

### Related Products

11-4011 Anti-Mouse IgG FITC

14-4714 Mouse IgG1 K Isotype Control Purified (P3.6.2.1)

Not for further distribution without written consent.

Copyright © 2000-2010 eBioscience, Inc.

Tel: 888.999.1371 or 858.642.2058 • Fax: 858.642.2046 • [www.eBioscience.com](http://www.eBioscience.com) • [info@eBioscience.com](mailto:info@eBioscience.com)