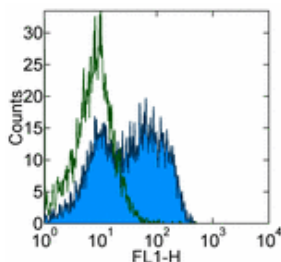


Anti-Mouse CD62L (L-Selectin) Purified

Catalog Number: 14-0621

Also Known As: LECAM-1, Ly-22

RUO: For Research Use Only



Staining of BALB/c splenocytes with 0.25 µg of Rat IgG2a κ Isotype Control Purified (cat. 14-4321) (open histogram) or 0.25 µg of Anti-Mouse CD62L (L-Selectin) Purified (filled histogram) followed by Anti-Rat IgG FITC (cat. 11-4811). Cells in the lymphocyte gate were used for analysis.

Product Information

Contents: Anti-Mouse CD62L (L-Selectin) Purified

REF Catalog Number: 14-0621

Clone: MEL-14

Concentration: 0.5 mg/ml

Host/Isotype: Rat IgG2a, κ

Formulation: aqueous buffer, 0.09% sodium azide, may contain carrier protein/stabilizer



Temperature Limitation: Store at 2-8°C.



Batch Code: Refer to Vial



Use By: Refer to Vial



Caution, contains Azide

Description

The MEL-14 monoclonal antibody reacts with mouse CD62L, a 76 kDa member of the selectin family. CD62L is expressed by neutrophils, monocytes, and subsets of T, B, and NK cells and binds a number of glycosylated, fucosylated, sulfated sialylated glycoproteins including CD34, glycam-1 and MAdCam-1. These interactions mediate rolling of lymphocytes on activated endothelium at the sites of inflammation and homing of cells to the high endothelial venules (HEV) of peripheral lymphoid tissues.

Applications Reported

The MEL-14 antibody has been reported for use in flow cytometric analysis, immunoprecipitation, and immunohistochemical staining. MEL-14 has also been reported in blocking of adhesion in functional studies. (Please use Functional Grade purified MEL-14, cat. 16-0621, in functional assays.)

Applications Tested

The MEL-14 antibody has been tested by flow cytometric analysis of mouse splenocyte suspensions. This can be used at less than or equal to 0.5 µg per test. A test is defined as the amount (µg) of antibody that will stain a cell sample in a final volume of 100 µL. Cell number should be determined empirically but can range from 10⁵ to 10⁸ cells/test. It is recommended that the antibody be carefully titrated for optimal performance in the assay of interest.

References

Gallatin, W. M., I. L. Weissman, et al. (1983). "A cell-surface molecule involved in organ-specific homing of lymphocytes." *Nature* 304(5921): 30-4.

Siegelman, M. H., I. C. Cheng, et al. (1990). "The mouse lymph node homing receptor is identical with the lymphocyte cell surface marker Ly-22: role of the EGF domain in endothelial binding." *Cell* 61(4): 611-22.

Related Products

11-4317 Streptavidin FITC

11-4811 Anti-Rat IgG FITC

12-4317 Streptavidin PE

13-4813 Anti-Rat IgG Biotin (Polyclonal)

14-4321 Rat IgG2a K Isotype Control Purified

17-4317 Streptavidin APC

Not for further distribution without written consent.

Copyright © 2000-2010 eBioscience, Inc.

Tel: 888.999.1371 or 858.642.2058 • Fax: 858.642.2046 • www.eBioscience.com • info@eBioscience.com