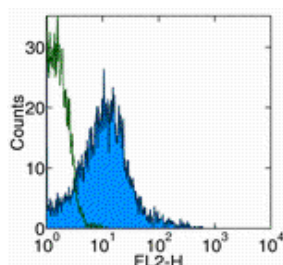


Anti-Mouse CD18 Purified

Catalog Number: 14-0181

Also Known As: Integrin beta 2, ITGB2

RUO: For Research Use Only. Not for use in diagnostic procedures.



Staining of mouse splenocytes with Anti-Mouse CD18 PE. Autofluorescence is shown via open histogram. Total viable cells were used for analysis.

Product Information

Contents: Anti-Mouse CD18 Purified

REF **Catalog Number:** 14-0181

Clone: M18/2

Concentration: 0.5 mg/mL

Host/Isotype: Rat IgG2a, kappa

Formulation: aqueous buffer, 0.09% sodium azide, may contain carrier protein/stabilizer



Temperature Limitation: Store at 2-8°C.



Batch Code: Refer to Vial



Use By: Refer to Vial



Caution, contains Azide

Description

The M18/2 monoclonal antibody reacts with mouse CD18, the 90-95 kDa integrin beta 2 glycoprotein. CD18 is the common β subunit that non-covalently associates with CD11a (alpha L), CD11b (alpha M) and CD11c (alpha X) to form LFA-1, Mac-1 and gp150/95. Heterodimers of CD18 and the α subunits are expressed broadly by all leukocytes with NK and T cells showing higher density of surface expression. Through the interactions of LFA-1, Mac-1 and gp150/95 with their counter-receptors, CD18 is involved in cellular adhesion and the immune response.

Applications Reported

The M18/2 antibody has been reported for use in flow cytometric analysis, immunoprecipitation, immunoblotting (WB), and immunohistochemical staining. It has also been reported in blocking of CD18 in functional studies. (Please use Functional Grade purified M18/2, cat. 16-0181, in functional assays.)

Applications Tested

The M18/2 antibody has been tested by flow cytometric analysis of mouse splenocyte and bone marrow cell suspensions. This can be used at less than or equal to 0.5 μ g per test. A test is defined as the amount (μ g) of antibody that will stain a cell sample in a final volume of 100 μ L. Cell number should be determined empirically but can range from 10^5 to 10^8 cells/test. It is recommended that the antibody be carefully titrated for optimal performance in the assay of interest.

References

Sanchez-Madrid, F., P. Simon, et al. Mapping of antigenic and functional epitopes on the alpha- and beta-subunits of two related mouse glycoproteins involved in cell interactions, LFA-1 and Mac-1. J Exp Med 1983. 158(2): 586-602.

Related Products

11-4811 Anti-Rat IgG FITC

14-4321 Rat IgG2a K Isotype Control Purified (eBR2a)

Not for further distribution without written consent.

Copyright © 2000-2010 eBioscience, Inc.

Tel: 888.999.1371 or 858.642.2058 • Fax: 858.642.2046 • www.eBioscience.com • info@eBioscience.com