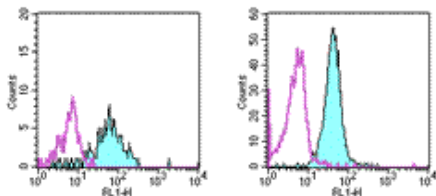


Anti-Human CD13 Purified

Catalog Number: 14-0138

Also Known As: Alanyl Aminopeptidase (ANPEP), Aminopeptidase N (PEPN)

RUO: For Research Use Only



Staining of normal human peripheral blood cells with 0.5 µg of Mouse IgG1 Isotype Control Purified (cat.14-4714) (open histogram) or 0.5 µg of Anti-Human CD13 Purified (filled histogram) followed by Anti-Mouse IgG FITC(cat.11-4011). Cells in the monocyte (left) and granulocyte (right) gates were used for analysis.

Product Information

Contents: Anti-Human CD13 Purified

REF Catalog Number: 14-0138


Clone: WM-15 (WM15)

Concentration: 0.5 mg/ml

Host/Isotype: Mouse IgG1, κ


HLDA Workshop: III M213

Formulation: aqueous buffer, 0.09% sodium azide, may contain carrier protein/stabilizer

 Temperature Limitation: Store at 2-8°C.

LOT Batch Code: Refer to Vial

 Use By: Refer to Vial

 Caution, contains Azide

Description

The WM-15 monoclonal antibody reacts with human CD13, also known as aminopeptidase N. CD13 is a transmembrane ectoenzyme occurring on monocytes and granulocytes but not lymphocytes in blood. It is also reportedly on a wide variety of cells and in a wide variety of tissues, including endothelial cells, epithelial cells, fibroblasts, kidney proximal tubules, intestine, and placenta. CD13 is reported to have many different functions including degradation of enkephalins and endorphins, terminal degradation of peptides, amino acid scavenging, antigen processing, and adhesion and migration of cells.

Applications Reported

The WM-15 (WM15) antibody has been reported for use in flow cytometric analysis, and microscopy.

Applications Tested

The WM-15 (WM15) antibody has been tested by flow cytometric analysis of lysed whole blood. This can be used at less than or equal to 1 µg per test. A test is defined as the amount (µg) of antibody that will stain a cell sample in a final volume of 100 µL. Cell number should be determined empirically but can range from 10⁵ to 10⁸ cells/test. It is recommended that the antibody be carefully titrated for optimal performance in the assay of interest.

References

Look AT, Ashmun RA, Shapiro LH, Peiper SC. 1989. Human myeloid plasma membrane glycoprotein CD13 (gp150) is identical to aminopeptidase N. *J Clin Invest* 83:1299-1307

Riemann D, Kehlen A, Thiele K, Lohn M, Langner J. 1997. Induction of aminopeptidase N/CD13 on human lymphocytes after adhesion to fibroblast-like synoviocytes, endothelial cells, epithelial cells, and monocytes/macrophages. *J Immunol*. 158(7):3425-32.

Related Products

11-4011 Anti-Mouse IgG FITC

11-4317 Streptavidin FITC

12-4317 Streptavidin PE

13-4013 Anti-Mouse IgG Biotin (Polyclonal)

14-4714 Mouse IgG1 K Isotype Control Purified

17-4317 Streptavidin APC

