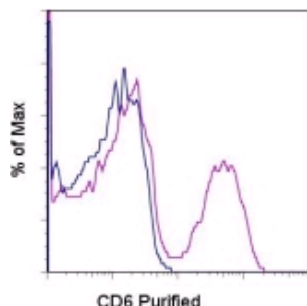


Anti-Mouse CD6 Purified

Catalog Number: 14-0061

RUO: For Research Use Only



Staining of C57Bl/6 splenocytes with 0.125 µg of Rat IgG2a Isotype Control Purified (cat. 14-4321) (blue histogram) or 0.125 µg of Anti-Mouse CD6 Purified (purple histogram) followed by Anti-Rat IgG PE (cat. 12-4822). Total viable cells were used for analysis.

Product Information

Contents: Anti-Mouse CD6 Purified

REF Catalog Number: 14-0061

Clone: IM348

Concentration: 0.5 mg/ml

Host/Isotype: Rat IgG2a

Formulation: aqueous buffer, 0.09% sodium azide, may contain carrier protein/stabilizer



Temperature Limitation: Store at 2-8°C.



Batch Code: Refer to Vial



Use By: Refer to Vial



Caution, contains Azide

Description

The monoclonal antibody IM348 recognizes mouse CD6, a transmembrane glycoprotein of the scavenger receptor family. The extracellular domain contains three scavenger receptor cysteine rich (SRCR) domains, a transmembrane region and a cytoplasmic domain of variable length depending on the isoform. CD6 is expressed on most T lymphocytes. Expression between human and mouse is slightly different. In mice B cells in the spleen do not have CD6, while humans express it on a subset of B lymphocytes. The CD6 ligand is CD166, also known as Activated Leukocyte Cell Adhesion Molecule (ALCAM). Through interactions with CD166 or homotypic CD6-CD6, a role exists in adhesion and migration during organogenesis. The intracellular domain of CD6 is constitutively phosphorylated, suggesting a role in T cell activation and signaling. In humans depletion of CD6-expressing cells increases graft versus host tolerance in transplants.

Applications Reported

This IM348 antibody has been reported for use in flow cytometric analysis, immunoblotting (WB), and immunohistology staining of frozen tissue sections.

Applications Tested

This IM348 antibody has been tested by flow cytometric analysis of mouse splenocytes. This can be used at less than or equal to 0.25 µg per test. A test is defined as the amount (µg) of antibody that will stain a cell sample in a final volume of 100 µL. Cell number should be determined empirically but can range from 10⁵ to 10⁸ cells/test. It is recommended that the antibody be carefully titrated for optimal performance in the assay of interest.

The IM348 antibody can also be used at <5 µg/ml in immunoblotting of non-reduced lysates.

References

Singer NG, Fox DA, Haqqi TM, Beretta L, Endres JS, Prohaska S, Parnes JR, Bromberg J, Sramkoski RM. CD6: expression during development, apoptosis and selection of human and mouse thymocytes. *Int Immunol.* 2002 Jun;14(6):585-97.

Bowen MA, Bajorath J, D'Egidio M, Whitney GS, Palmer D, Kobarg J, Starling GC, Siadak AW, Aruffo A. Characterization of mouse ALCAM (CD166): the CD6-binding domain is conserved in different homologs and mediates cross-species binding. *Eur J Immunol.* 1997 Jun;27(6):1469-78.

Pal A, Romain PL, Singer NG, Fox D, Stavnezer J. Mouse CD6: sequence of cDNA and expression of mRNA. *Immunol Lett.* 1996 Jan;49(1-2):133-7.

Related Products

14-4321 Rat IgG2a K Isotype Control Purified

17-0031 Anti-Mouse CD3e APC (145-2C11)

Not for further distribution without written consent.

Copyright © 2000-2010 eBioscience, Inc.

Tel: 888.999.1371 or 858.642.2058 • Fax: 858.642.2046 • www.eBioscience.com • info@eBioscience.com