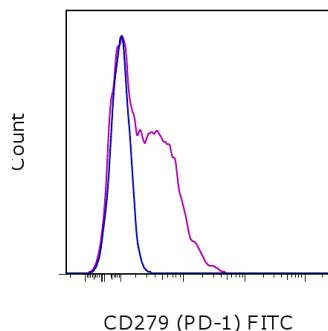


Anti-Mouse CD279 (PD-1) FITC

Catalog Number: 11-9981

Also known as: Pcd1, Programmed cell death protein 1

RUO: For Research Use Only. Not for use in diagnostic procedures.



Staining of 3-day Anti-Mouse CD3 and Anti-Mouse CD28 Functional Grade Purified (cat. 16-0031 and 16-0281)-stimulated C57Bl/6 splenocytes with 0.25 ug of Rat IgG2b K Isotype Control FITC (cat. 11-4031) (blue histogram) or 0.25 ug of Anti-Mouse CD279 (PD-1) FITC (purple histogram). Total viable cells, as determined by Fixable Viability Dye eFluor[®] 450 (cat. 65-0863), were used for analysis.

Product Information

Contents: Anti-Mouse CD279 (PD-1) FITC



Catalog Number: 11-9981

Clone: RMP1-30

Concentration: 0.5 mg/mL

Host/Isotype: Rat IgG2b, kappa

Formulation: aqueous buffer, 0.09% sodium azide, may contain carrier protein/stabilizer

Temperature Limitation: Store at 2-8°C. Do not freeze. Light sensitive material.

Batch Code: Refer to vial

Use By: Refer to vial

Contains sodium azide



Description

The RMP1-30 antibody reacts with mouse PD-1 (programmed death-1), a 55 kDa member of the Ig superfamily. PD-1 contains the immunoreceptor tyrosine-based inhibitory motif (ITIM) and plays a key role in peripheral tolerance and autoimmune disease in mice. PD-1 is expressed mainly on activated T and B lymphocytes. Two novel B7 Family members have been identified as PD-1 ligands, PD-L1 (B7-H1) and PD-L2 (B7-DC). Evidence reported to date suggests overlapping functions for these ligands and their constitutive expression on some normal tissues and upregulation on activated antigen-presenting cells. RMP1-30 does not block the binding of either B7-H1-Ig or B7-DC-Ig to PD-1 transfectants.

Applications Reported

The RMP1-30 antibody has been reported for use in flow cytometric analysis.

Applications Tested

The RMP1-30 antibody has been tested by flow cytometric analysis of mouse ConA-activated spleen cell suspensions. This can be used at less than or equal to 0.5 µg per test. A test is defined as the amount (µg) of antibody that will stain a cell sample in a final volume of 100 µL. Cell number should be determined empirically but can range from 10⁵ to 10⁸ cells/test. It is recommended that the antibody be carefully titrated for optimal performance in the assay of interest.

References

Matsumoto K, Inoue H, Nakano T, Tsuda M, Yoshiura Y, Fukuyama S, Tsushima F, Hoshino T, Aizawa H, Akiba H, Pardoll D, Hara N, Yagita H, Azuma M, Nakanishi Y. B7-DC regulates asthmatic response by an IFN-gamma-dependent mechanism. J Immunol. 2004 Feb 15;172(4):2530-41.

Nishimura H, Okazaki T, Tanaka Y, Nakatani K, Hara M, Matsumori A, Sasayama S, Mizoguchi A, Hiai H, Minato N, Honjo T. Autoimmune dilated cardiomyopathy in PD-1 receptor-deficient mice. Science. 2001 Jan 12;291(5502):319-22.

Not for further distribution without written consent.

Copyright © 2000-2012 eBioscience, Inc.

Tel: 888.999.1371 or 858.642.2058 • Fax: 858.642.2046 • www.ebioscience.com • info@ebioscience.com

Anti-Mouse CD279 (PD-1) FITC

Catalog Number: 11-9981

Also known as: Pdc1, Programmed cell death protein 1

RUO: For Research Use Only. Not for use in diagnostic procedures.

Freeman GJ, Long AJ, Iwai Y, Bourque K, Chernova T, Nishimura H, Fitz LJ, Malenkovich N, Okazaki T, Byrne MC, Horton HF, Fouser L, Carter L, Ling V, Bowman MR, Carreno BM, Collins M, Wood CR, Honjo T. Engagement of the PD-1 immunoinhibitory receptor by a novel B7 family member leads to negative regulation of lymphocyte activation. *J Exp Med.* 2000 Oct 2;192(7):1027-34.

Agata Y, Kawasaki A, Nishimura H, Ishida Y, Tsubata T, Yagita H, Honjo T. Expression of the PD-1 antigen on the surface of stimulated mouse T and B lymphocytes. *Int Immunol.* 1996 May;8(5):765-72.

Related Products

11-4031 Rat IgG2b K Isotype Control FITC
12-9942 Anti-Mouse CD278 (ICOS) PE (7E.17G9)
16-0031 Anti-Mouse CD3e Functional Grade Purified (145-2C11)
16-0281 Anti-Mouse CD28 Functional Grade Purified (37.51)
65-0863 Fixable Viability Dye eFluor® 450