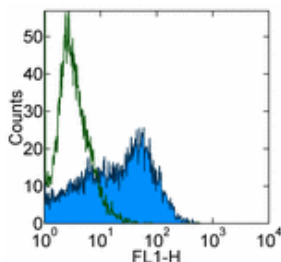


## Anti-Mouse CD273 (B7-DC) FITC

Catalog Number: 11-9972

Also Known As: B7DC, PD-L2, PDL-2, PDL2

RUO: For Research Use Only



In vitro BALB/c mouse bone marrow-derived dendritic cells were stained with 0.25 µg of Rat IgG2a κ Isotype Control FITC (cat. 11-4321) (open histogram) or 0.25 µg of Anti-Mouse CD273 (B7-DC) FITC (filled histogram). Total viable cells were used for analysis.

### Product Information

Contents: Anti-Mouse CD273 (B7-DC) FITC


**REF** Catalog Number: 11-9972

Clone: 122


Concentration: 0.5 mg/ml


Host/Isotype: Rat IgG2a, κ

Formulation: aqueous buffer, 0.09% sodium azide, may contain carrier protein/stabilizer

 Temperature Limitation: Store at 2-8°C. Do not freeze. Light sensitive material.

**LOT** Batch Code: Refer to Vial

 Use By: Refer to Vial

 Caution, contains Azide

### Description

The 122 monoclonal antibody reacts with mouse B7-DC, also known as PD-L2. B7-DC, a recently identified member of the B7 family, has a predicted molecular weight of approximately 25 kDa and belongs to the Ig superfamily. The mouse B7-DC has a short cytoplasmic tail (4aa). B7-DC is primarily expressed by subpopulations of dendritic cells and monocytes/macrophages in the mouse. Although B7-DC has structural and sequence similarities to the B7 family, it does not bind CD28/CTLA-4, rather it is a ligand for PD-1. The interactions between PD-1 and B7-DC/PD-L2 have been reported to be involved in costimulation or suppression of T cell proliferation depending on state of cellular activation. 122 has been demonstrated to block binding of TY25 (Cat. No. 14-5986), another mAb specific for mouse B7-DC.

### Applications Reported

122 has been reported for use in flow cytometric analysis.

### Applications Tested

The 122 antibody has been tested by flow cytometric analysis of mouse dendritic cells and mouse B7-DC transfected cells. This can be used at less than or equal to 0.5 µg per test. A test is defined as the amount (µg) of antibody that will stain a cell sample in a final volume of 100 µL. Cell number should be determined empirically but can range from 10<sup>5</sup> to 10<sup>8</sup> cells/test. It is recommended that the antibody be carefully titrated for optimal performance in the assay of interest.

### References

Ishida M, Iwai Y, Tanaka Y, Okazaki T, Freeman GJ, Minato N, Honjo T. 2002. Differential expression of PD-L1 and PD-L2, ligands for an inhibitory receptor PD-1, in the cells of lymphohematopoietic tissues. *Immunol Lett.* 84(1):57-62. Carter L, Fouser LA, Jussif J, Fitz L, Deng B, Wood CR, Collins M, Honjo T, Freeman GJ, Carreno BM. 2002. PD-1:PD-L inhibitory pathway affects both CD4(+) and CD8(+) T cells and is overcome by IL-2. *Eur J Immunol.* 32(3):634-43.

### Related Products

11-4321 Rat IgG2a K Isotype Control FITC

12-5986 Anti-Mouse CD273 (B7-DC) PE (TY25)

13-5986 Anti-Mouse CD273 (B7-DC) Biotin (TY25)

14-5986 Anti-Mouse CD273 (B7-DC) Purified (TY25)

16-5986 Anti-Mouse CD273 (B7-DC) Functional Grade Purified (TY25)

