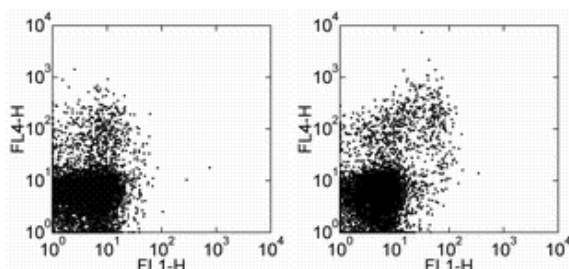


## Anti-Mouse CD282 (TLR2) FITC

Catalog Number: 11-9022

Also Known As: toll-like receptor 2

RUO: For Research Use Only



C57BL/6 splenocytes were stained with Anti-Mouse CD11b APC (cat. 17-0112) and 0.25 ug of Mouse IgG2a K Isotype Control FITC (cat. 11-4724) (left) or 0.25 ug of Anti-Mouse CD282 (TLR2) FITC (right). Total viable cells were used for analysis.

### Product Information

**Contents:** Anti-Mouse CD282 (TLR2) FITC


**REF** **Catalog Number:** 11-9022

**Clone:** mT2.7

**Concentration:** 0.5 mg/mL

**Host/Isotype:** Mouse IgG2a, kappa

**Formulation:** aqueous buffer, 0.09% sodium azide, may contain carrier protein/stabilizer

 **Temperature Limitation:** Store at 2-8°C. Do not freeze. Light sensitive material.

 **Batch Code:** Refer to Vial

 **Use By:** Refer to Vial

 **Caution, contains Azide**

### Description

The mT2.7 monoclonal antibody reacts with mouse Toll-like receptor 2 (TLR2). Mouse TLR2 is expressed by the myeloid lineage, including macrophage and dendritic cells in splenocytes and the RAW264.7 cell line. To date, at least twelve members of the Toll family have been identified in human and mouse. This family of type I transmembrane protein is characterized by an extracellular domain with leucine-rich repeats and a cytoplasmic domain with homology to the type I IL-1 receptor. Two of these receptors, TLR2 and TLR4, are pattern recognition receptors and signaling molecules in response to bacterial lipoproteins and have been implicated in innate immunity and inflammation. TLR2 is expressed on the surface of cells and is responsible for distinguishing different pathogens.

### Applications Reported

This mT2.7 antibody has been reported for use in flow cytometric analysis.

### Applications Tested

The mT2.7 antibody has been tested by flow cytometric analysis of mouse splenocytes. This can be used at less than or equal to 0.5 µg per test. A test is defined as the amount (µg) of antibody that will stain a cell sample in a final volume of 100 µL. Cell number should be determined empirically but can range from 10<sup>5</sup> to 10<sup>8</sup> cells/test. It is recommended that the antibody be carefully titrated for optimal performance in the assay of interest.

### References

Meng G, Rutz M, Schiemann M, Metzger J, Grabiec A, Schwandner R, Lippa PB, Ebel F, Busch DH, Bauer S, Wagner H, Kirschning CJ. 2004. Antagonistic antibody prevents toll-like receptor 2-driven lethal shock-like syndromes. *J Clin Invest.* 2004. 113:1473-81.

### Related Products

11-4724 Mouse IgG2a K Isotype Control FITC

12-0112 Anti-Mouse CD11b PE (M1/70)

14-8185 B18R Recombinant Protein

Not for further distribution without written consent.

Copyright © 2000-2010 eBioscience, Inc.

Tel: 888.999.1371 or 858.642.2058 • Fax: 858.642.2046 • www.eBioscience.com • info@eBioscience.com