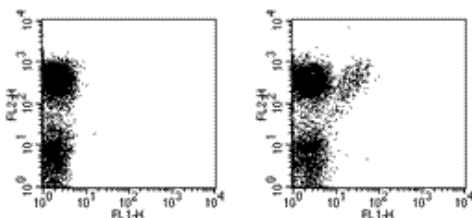


## Anti-Mouse gamma delta TCR FITC

Catalog Number: 11-5811

Also Known As: gd TCR, gdTCR, TCRgd

RUO: For Research Use Only



Staining of C57BL/6 lymph node cells with Anti-Mouse CD3e PE (cat. 12-0031) and staining buffer (autofluorescence) (left) or 0.25 µg of Anti-Mouse γδ TCR FITC (right). Total viable cells were used for analysis.

### Product Information

Contents: Anti-Mouse gamma delta TCR FITC


 Catalog Number: 11-5811

Clone: UC7-13D5

Concentration: 0.5 mg/ml


Host/Isotype: Armenian Hamster IgG

Formulation: aqueous buffer, 0.09% sodium azide, contains stabilizer if necessary

 Temperature Limitation: Store at 2-8°C. Do not freeze. Light sensitive material.

 Batch Code: Refer to Vial

 Use By: Refer to Vial

 Caution, contains Azide

### Description

The UC7-13D5 monoclonal antibody reacts with the mouse γδ TCR complex. γδ TCR is expressed by a small subset of T cells in the thymus, peripheral lymphoid tissues, intestinal epithelium, and epidermis. The exact specificity, ligand and function of γδ TCR-bearing T cells are not yet fully understood; it is suggested that these cells recognize bacterial ligands and some tumor cells in the context of MHC class I-like gene products and play a role in regulation of the immune response and during bacterial infection.

### Applications Reported

For research use only, not for diagnostic or therapeutic use. UC7-13D5 has been reported for use as a phenotypic marker for γδTCR-expressing T cells in flow cytometric analysis.

### Applications Tested

The UC7-13D5 antibody has been tested by flow cytometric analysis of mouse thymocyte and splenocyte suspensions and can be used at less than or equal to 0.5 µg per test. A test is defined as the amount (µg) of antibody that will stain a cell sample in a final volume of 100 µL. Cell number should be determined empirically but can range from 10<sup>5</sup> to 10<sup>8</sup> cells/test. It is recommended that the antibody be carefully titrated for optimal performance in the assay of interest.

### References

Koenecke C, Chennupati V, Schmitz S, Malissen B, Förster R, Prinz I. In vivo application of mAb directed against the gammadelta TCR does not deplete but generates "invisible" gammadelta T cells. *Eur J Immunol.* 2009 Feb;39(2):372-9. (UC7-13D5, FA, PubMed)

Usami J, Hiromatsu K, Matsumoto Y, Maeda K, Inagaki H, Suzuki T, Yoshikai Y. A protective role of gamma delta T cells in primary infection with *Listeria monocytogenes* in autoimmune non-obese diabetic mice. *Immunology.* 1995 Oct;86(2):199-205. (UC7-13D5, FA)

Taguchi, T., W. K. Aicher, et al. Novel function for intestinal intraepithelial lymphocytes. Murine CD3+, gamma/delta TCR+ T cells produce IFN-gamma and IL-5. *J Immunol* 1991 147(11): 3736-44.

Kakkanaiah, V. N., M. Nagarkatti, et al. CD4-CD8- thymocytes from MRL-lpr/lpr mice exhibit abnormal proportions of alpha beta- and gamma delta-TCR+ cells and demonstrate defective responsiveness when activated through the TCR. *Cell Immunol* 1991 137(2): 269-82.

Bluestone, J. A., R. Q. Cron, et al. Repertoire development and ligand specificity of murine TCR gamma delta cells. *Immunol Rev* 1991 120: 5-33.

### Related Products

11-4888 Armenian Hamster IgG Isotype Control FITC (eBio299Arm)

---

Not for further distribution without written consent.

Copyright © 2000-2010 eBioscience, Inc.

Tel: 888.999.1371 or 858.642.2058 • Fax: 858.642.2046 • [www.eBioscience.com](http://www.eBioscience.com) • [info@eBioscience.com](mailto:info@eBioscience.com)