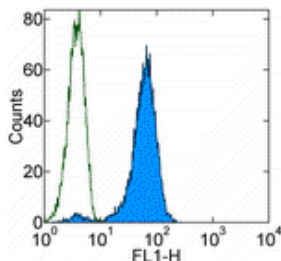


Anti-Mouse DO11.10 TCR FITC

Catalog Number: 11-5808

RUO: For Research Use Only. Not for use in diagnostic procedures.



Staining of the DO11.10 T cell hybridoma with 0.06 ug of Mouse IgG2a K Isotype Control FITC (cat. 11-4724) (open histogram) or Anti-Mouse DO11.10 TCR FITC (filled histogram). Total viable cells were used for analysis.

Product Information

Contents: Anti-Mouse DO11.10 TCR FITC


REF Catalog Number: 11-5808

Clone: KJ1-26 (KJ126, KJI-26, KJI26)


Concentration: 0.5 mg/mL

Host/Isotype: Mouse IgG2a

Formulation: aqueous buffer, 0.09% sodium azide, may contain carrier protein/stabilizer

 Temperature Limitation: Store at 2-8°C. Do not freeze. Light sensitive material.

LOT Batch Code: Refer to Vial

 Use By: Refer to Vial

 Contains sodium azide

Description

The KJ1-26 anti-idiotypic monoclonal antibody binds the T-cell receptor (TCR) expressed on DO11.10 and DO11.10.24 murine T cell hybridomas, but not on any other T cell hybridomas tested. The TCR expressed on DO11.10 recognizes an ovalbumin peptide in the context of I-A^d major histocompatibility molecules. The use of DO11.10 and KJ1-26 have proven to be instrumental in describing many of the intricate details of T cell immunity.

Applications Reported

This KJ1-26 (KJ126, KJI-26, KJI26) antibody has been reported for use in flow cytometric analysis.

Applications Tested

This KJ1-26 (KJ126, KJI-26, KJI26) antibody has been tested by flow cytometric analysis of the DO11.10 T cell hybridoma. This can be used at less than or equal to 0.125 µg per test. A test is defined as the amount (µg) of antibody that will stain a cell sample in a final volume of 100 µL. Cell number should be determined empirically but can range from 10⁵ to 10⁸ cells/test. It is recommended that the antibody be carefully titrated for optimal performance in the assay of interest.

References

Haskins, K., R. Kubo, J. White, M. Pigeon, J. Kappler, and P. Marrack. 1983. The major histocompatibility complex-restricted antigen receptor on T cells. Isolation with a monoclonal antibody. *J. Exp. Med.* 157: 1149-69.

Marrack, P., R. Shimonkevitz, C. Hannum, K. Haskins, and J. Kappler. 1983. The major histocompatibility complex-restricted antigen receptor on T cells. IV. An anti-idiotypic antibody predicts both antigen and specificity. *J. Exp. Med.* 158: 1635-46.

Murphy, K. M., A. B. Heimberger, and D. Y. Loh. 1990. Induction by antigen of intrathymic apoptosis of CD4⁺ CD8⁺ TCR^{lo} thymocytes in vivo. *Science.* 250: 1720-3.

Related Products

11-4724 Mouse IgG2a K Isotype Control FITC

Not for further distribution without written consent.

Copyright © 2000-2010 eBioscience, Inc.

Tel: 888.999.1371 or 858.642.2058 • Fax: 858.642.2046 • www.eBioscience.com • info@eBioscience.com