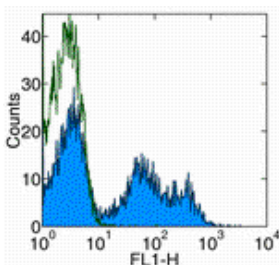


## Anti-Rat IgM FITC

**Catalog Number:** 11-0990

**Also Known As:** Immunoglobulin M, Ig M

**RUO: For Research Use Only. Not for use in diagnostic procedures.**



Staining of rat splenocytes with Anti-Rat IgM FITC (filled histogram). Appropriate isotype controls were used (open histogram). Total viable cells were used for analysis.

### Product Information

**Contents:** Anti-Rat IgM FITC


**REF** **Catalog Number:** 11-0990

**Clone:** HIS40


**Concentration:** 0.5 mg/mL


**Host/Isotype:** Mouse IgG1, kappa

**Formulation:** aqueous buffer, 0.09% sodium azide, may contain carrier protein/stabilizer

 **Temperature Limitation:** Store at 2-8°C. Do not freeze. Light sensitive material.

**LOT** **Batch Code:** Refer to Vial

 **Use By:** Refer to Vial

 **Caution, contains Azide**

### Description

The HIS40 monoclonal antibody reacts with the  $\mu$  heavy chain of rat IgM. It does not react with other classes of rat immunoglobulin including IgD, IgG or IgA. IgM is expressed intracellularly, during early stages of B lymphopoiesis, and then on the surface of more mature B cells in the bone marrow and peripheral B cells. Fluorochrome conjugated HIS40 is used as a detection secondary for rat IgM primary antibodies.

### Applications Reported

The HIS40 antibody has been reported for use in flow cytometric analysis, immunocytochemistry and immunohistochemistry.

### Applications Tested

The HIS40 antibody has been tested by flow cytometric analysis as a second step to detect rat IgM primary antibodies. This can be used at less than or equal to 0.25  $\mu$ g per test. A test is defined as the amount ( $\mu$ g) of antibody that will stain a cell sample in a final volume of 100  $\mu$ L. Cell number should be determined empirically but can range from  $10^5$  to  $10^8$  cells/test. It is recommended that the antibody be carefully titrated for optimal performance in the assay of interest.

### References

Dammers PM, de Boer NK, Deenen GJ, Nieuwenhuis P, Kroese FG. The origin of marginal zone B cells in the rat. *Eur J Immunol.* 1999 May;29(5):1522-31. (**HIS40**, IHC frozen, FC)

Kroese, FG, Wubbena AS, et al. 1987. B lymphocyte differentiation in the rat: production and characterization of monoclonal antibodies to B lineage-associated antigens. *Eur J Immunol.* 17(7): 921-8.

### Related Products

11-4714 Mouse IgG1 K Isotype Control FITC (P3.6.2.8.1)

Not for further distribution without written consent.

Copyright © 2000-2012 eBioscience, Inc.

Tel: 888.999.1371 or 858.642.2058 • Fax: 858.642.2046 • [www.eBioscience.com](http://www.eBioscience.com) • [info@eBioscience.com](mailto:info@eBioscience.com)