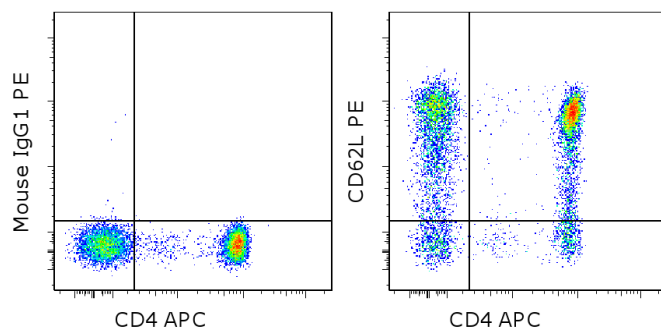


Anti-Human CD62L (L-Selectin) FITC

Catalog Number: 11-0629

Also known as: LECAM-1, Leu-8

RUO: For Research Use Only. Not for use in diagnostic procedures.



Staining of normal human peripheral blood cells with Anti-Human CD4 APC (cat. 17-0049) and Mouse IgG1 K Isotype Control FITC (cat. 11-4714) (left) or Anti-Human CD62L (L-Selectin) FITC (right). Cells in the lymphocyte gate were used for analysis.

Product Information

Contents: Anti-Human CD62L (L-Selectin) FITC



Catalog Number: 11-0629

Clone: DREG-56 (DREG56)

Concentration: 5 uL (1 ug)/test

Host/Isotype: Mouse IgG1, kappa

HLDA Workshop: V S056



Formulation: aqueous buffer, 0.09% sodium azide, may contain carrier protein/stabilizer

Temperature Limitation: Store at 2-8°C. Do not freeze. Light sensitive material.



Batch Code: Refer to vial



Use By: Refer to vial



Caution, contains Azide

Description

The DREG-56 monoclonal antibody reacts with human CD62L, a 76 kDa member of the selectin family. CD62L is expressed by neutrophils, monocytes, and subsets of T, B, and NK cells and binds a number of glycosylated, fucosylated, sulfated sialylated glycoproteins including CD34, glycamin-1 and MAdCAM-1. These interactions mediate rolling of lymphocytes on activated endothelium at the sites of inflammation and homing of cells to the high endothelial venules (HEV) of peripheral lymphoid tissues.

Applications Reported

The DREG-56 (DREG56) antibody has been reported for use in flow cytometric analysis.

Applications Tested

The DREG-56 (DREG56) antibody has been pre-titrated and tested by flow cytometric analysis of human peripheral blood leukocytes. This can be used at 5 µl (1 µg)/per test. A test is defined as the amount (µg)/test of antibody that will stain a cell sample in a final volume of 100 µL. Cell number should be determined empirically but can range from 10⁵ to 10⁸ cells/test.

References

Jutila MA, Kurk S, Jackiw L, Knibbs RN, Stoolman LM. J Immunol. L-selectin serves as an E-selectin ligand on cultured human T lymphoblasts. 2002 Aug 15;169(4):1768-73. (**Dreg-56**, WB, PubMed)

Schlossman, S., L. Bloumsell, et al. eds. 1995. Leucocyte Typing V: White Cell Differentiation Antigens. Oxford University Press. New York.

Kishimoto TK, Jutila MA, Butcher EC. Identification of a human peripheral lymph node homing receptor: a rapidly down-regulated adhesion molecule. Proc Natl Acad Sci U S A. 1990 Mar;87(6):2244-8. (**Dreg-56**, mAb generation, WB, FC, PubMed)

Related Products

Not for further distribution without written consent.

Copyright © 2000-2012 eBioscience, Inc.

Tel: 888.999.1371 or 858.642.2058 • Fax: 858.642.2046 • www.ebioscience.com • info@ebioscience.com

Anti-Human CD62L (L-Selectin) FITC

Catalog Number: 11-0629

Also known as: LECAM-1, Leu-8

RUO: For Research Use Only. Not for use in diagnostic procedures.

11-4714 Mouse IgG1 K Isotype Control FITC (P3.6.2.8.1)

17-0049 Anti-Human CD4 APC (RPA-T4)

Not for further distribution without written consent.

Copyright © 2000-2012 eBioscience, Inc.

Tel: 888.999.1371 or 858.642.2058 • Fax: 858.642.2046 • www.ebioscience.com •
info@ebioscience.com