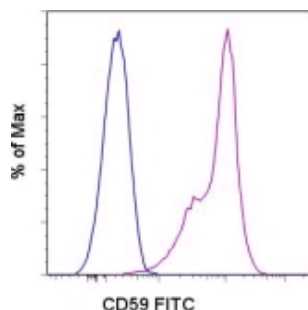


## Anti-Human CD59 (Protectin) FITC

Catalog Number: 11-0597

Also Known As: membrane inhibitor of reactive lysis, MIRL, complement regulatory protein

RUO: For Research Use Only



Staining of normal human peripheral blood cells with Mouse IgG2a  $\kappa$  Isotype Control FITC (cat. 11-4724) (blue histogram) or Anti-Human CD59 (Protectin) FITC (purple histogram). Cells in the lymphocyte gate were used for analysis.

### Product Information

Contents: Anti-Human CD59 (Protectin) FITC

**REF** Catalog Number: 11-0597


Clone: MEM-43 (MEM43)

Concentration: 5  $\mu$ l (0.125  $\mu$ g)/test

Host/Isotype: Mouse IgG2a


HLDA Workshop: V

Formulation: aqueous buffer, 0.09% sodium azide, contains stabilizer if necessary

 Temperature Limitation: Store at 2-8°C. Do not freeze. Light sensitive material.

**LOT** Batch Code: Refer to Vial

 Use By: Refer to Vial

 Caution, contains Azide

### Description

The MEM-43 monoclonal antibody reacts with human CD59, also known as protectin, membrane inhibitor of reactive lysis (MIRL), and membrane-attack-complex-inhibitory factor (MACIF). CD59 is an approximately 19 kDa GPI-linked glycoprotein expressed by hematopoietic and non-hematopoietic cells. Through binding complement components C8 and C9, CD59 inhibits the assembly of the membrane attack complex and the cytolytic activity by complement. CD59 also interacts with CD2 and has a role in T cell activation.

### Applications Reported

For research use only, not for diagnostic or therapeutic use. The MEM-43 (MEM43) antibody has been reported for use in flow cytometric analysis.

### Applications Tested

This MEM-43 (MEM43) antibody has been pre-titrated and tested by flow cytometric analysis of human peripheral blood leukocytes. This can be used at 5  $\mu$ l (0.125  $\mu$ g)/per test. A test is defined as the amount ( $\mu$ g)/test of antibody that will stain a cell sample in a final volume of 100  $\mu$ l. Cell number should be determined empirically but can range from  $10^5$  to  $10^8$  cells/test.

### References

Schlossman, S., L. Bloumsell, et al. eds. 1995. Leucocyte Typing V: White Cell Differentiation Antigens. Oxford University Press. New York.

### Related Products

11-4724 Mouse IgG2a K Isotype Control FITC

Not for further distribution without written consent.

Copyright © 2000-2010 eBioscience, Inc.

Tel: 888.999.1371 or 858.642.2058 • Fax: 858.642.2046 • [www.eBioscience.com](http://www.eBioscience.com) • [info@eBioscience.com](mailto:info@eBioscience.com)