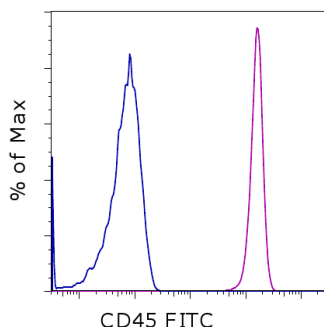


Anti-Human CD45 FITC

Catalog Number: 11-0459

Also known as: Leukocyte Common Antigen, LCA, Ly-5

RUO: For Research Use Only. Not for use in diagnostic procedures.



Staining of normal human peripheral blood cells with Mouse IgG1 K Isotype Control FITC (cat. 11-4714) (blue histogram) or Anti-Human CD45 FITC (purple histogram). Cells in the lymphocyte gate were used for analysis.

Product Information



Contents: Anti-Human CD45 FITC

Catalog Number: 11-0459

Clone: HI30

Concentration: 5 μ L (0.25 μ g)/test

Host/Isotype: Mouse IgG1, kappa

HLDA Workshop: IV N816



Formulation: aqueous buffer, 0.09% sodium azide, may contain carrier protein/stabilizer

Temperature Limitation: Store at 2-8°C. Do not freeze. Light sensitive material.



Batch Code: Refer to vial



Use By: Refer to vial



Contains sodium azide

Description

The HI30 monoclonal antibody reacts with all isoforms of human CD45, also known as Leukocyte Common Antigen (LCA). CD45 is expressed by all hematopoietic cells excluding circulating erythrocytes and platelets. The cytoplasmic portion of CD45 has tyrosine phosphatase enzymatic activity and plays an important role in activation of lymphocytes.

Applications Reported

The HI30 antibody has been reported for use in flow cytometric analysis.

Applications Tested

This HI30 antibody has been pre-titrated and tested by flow cytometric analysis of human peripheral blood leukocytes. This can be used at 5 μ L (0.25 μ g) per test. A test is defined as the amount (μ g) of antibody that will stain a cell sample in a final volume of 100 μ L. Cell number should be determined empirically but can range from 10^5 to 10^8 cells/test.

References

Ninomiya M, Abe A, Katsumi A, Xu J, Ito M, Arai F, Suda T, Ito M, Kiyoi H, Kinoshita T, Naoe T. Homing, proliferation and survival sites of human leukemia cells in vivo in immunodeficient mice. *Leukemia*. 2007 Jan;21(1):136-42. (HI30, IF frozen)

Bouma-ter Steege JC, Baeten CI, Thijssen VL, Satijn SA, Verhoeven IC, Hillen HF, Wagstaff J, Griffioen AW. Angiogenic profile of breast carcinoma determines leukocyte infiltration. *Clin Cancer Res*. 2004 Nov 1;10(21):7171-8. (HI30, IHC frozen)

Knapp, W., B. Dorken, et al. eds. (1989). *Leucocyte Typing IV: White Cell Differentiation Antigens*. Oxford University Press. New York.

Related Products

00-4222 Flow Cytometry Staining Buffer

Not for further distribution without written consent.

Copyright © 2000-2012 eBioscience, Inc.

Tel: 888.999.1371 or 858.642.2058 • Fax: 858.642.2046 • www.ebioscience.com • info@ebioscience.com

Anti-Human CD45 FITC

Catalog Number: 11-0459

Also known as: Leukocyte Common Antigen, LCA, Ly-5

RUO: For Research Use Only. Not for use in diagnostic procedures.

00-4300 10X RBC Lysis Buffer (Multi-species)

11-4714 Mouse IgG1 K Isotype Control FITC (P3.6.2.8.1)