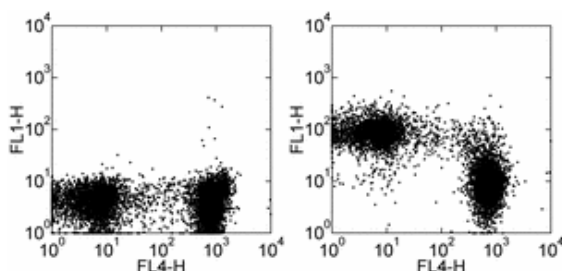


Anti-Mouse CD43 FITC

Catalog Number: 11-0431

Also Known As: Leukosialin, LSN, Sialophorin, SPN

RUO: For Research Use Only



Staining of C57BL/6 splenocytes with Anti-Human/Mouse CD45R (B220) APC (cat. 17-0452) and 0.06 µg of Rat IgM κ Isotype Control FITC (cat. 11-4341) (left) or 0.06 µg of Anti-Mouse CD43 FITC (right). Cells in the lymphocyte gate were used for analysis.

Product Information

Contents: Anti-Mouse CD43 FITC


REF Catalog Number: 11-0431

Clone: eBioR2/60

Concentration: 0.5 mg/ml


Host/Isotype: Rat IgM

Formulation: aqueous buffer, 0.09% sodium azide, may contain carrier protein/stabilizer

 Temperature Limitation: Store at 2-8°C. Do not freeze. Light sensitive material.

LOT Batch Code: Refer to Vial

 Use By: Refer to Vial

 Caution, contains Azide

Description

The eBioR2/60 monoclonal antibody reacts with mouse CD43, also known as leukosialin and sialophorin. CD43 has glycoforms of approximately 115 and 130 kDa, and is expressed by an early B cell subset in BM, thymocytes and mature T cells, NK cells, myeloid lineage cells and platelets. CD43 is reported to bind to CD54 and play a role in adhesion and B cell survival.

While the S7 and 1B11 monoclonal antibody clones detect only certain isoforms of CD43, data suggests that R2/60 detects the expression of both isoforms. It has been demonstrated that R2/60 stains the majority of CD4+ and CD8+ splenocytes, as well as a significant population of CD19+ splenocytes. However, the clones S7 and 1B11 stain only CD4+ and CD8+, or CD19+ splenocytes, respectively. This suggests that S7 and 1B11 recognize distinct epitopes which are differentially expressed by splenic B and T cells, whereas R2/60 recognizes an epitope shared by both isoforms of CD43.

Applications Reported

This eBioR2/60 antibody has been reported for use in flow cytometric analysis.

Applications Tested

This eBioR2/60 antibody has been tested by flow cytometric analysis of mouse splenocytes. This can be used at less than or equal to 0.125 µg per test. A test is defined as the amount (µg) of antibody that will stain a cell sample in a final volume of 100 µL. Cell number should be determined empirically but can range from 10⁵ to 10⁸ cells/test. It is recommended that the antibody be carefully titrated for optimal performance in the assay of interest.

References

Bagriacik EU, Armstrong MD, Okabe M, Klein JR. Differential expression of CD43 isoforms on murine T cells and their relationship to acute intestinal graft versus host disease: studies using enhanced-green fluorescent protein transgenic mice. *Int Immunol.* 1999 Oct;11(10):1651-62. (R2/60, WB, FC, PubMed)

Sperling AI, Green JM, Mosley RL, Smith PL, DiPaolo RJ, Klein JR, Bluestone JA, Thompson CB. CD43 is a murine T cell costimulatory receptor that functions independently of CD28. *J Exp Med.* 1995 Jul 1;182(1):139-46. (R2/60, FC, WB, FA, PubMed)

Related Products

11-4341 Rat IgM Isotype Control FITC

Not for further distribution without written consent.

Copyright © 2000-2010 eBioscience, Inc.

Tel: 888.999.1371 or 858.642.2058 • Fax: 858.642.2046 • www.eBioscience.com • info@eBioscience.com