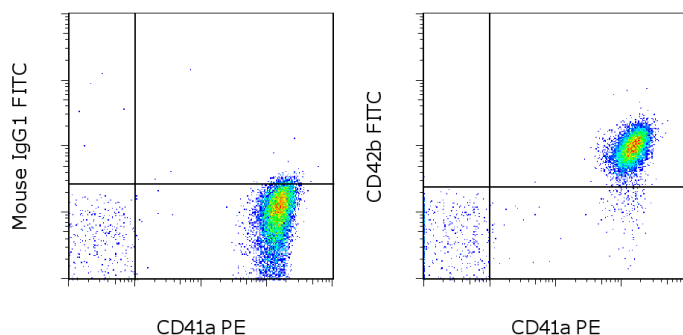


## Anti-Human CD42b FITC

**Catalog Number:** 11-0429

**RUO: For Research Use Only. Not for use in diagnostic procedures.**



Staining of human platelets with Anti-Human CD41a PE (cat. 12-0419) and Mouse IgG1 K Isotype Control FITC (cat. 11-4714) (left) or Anti-Human CD42b FITC (right). Total events were used for analysis.

### Product Information

**Contents:** Anti-Human CD42b FITC  
**Catalog Number:** 11-0429  
**Clone:** HIP1  
**Concentration:** 5  $\mu$ L (1  $\mu$ g)/test  
**Host/Isotype:** Mouse IgG1, kappa  
**HLDA Workshop:** IV P40

**Formulation:** aqueous buffer, 0.09% sodium azide, may contain carrier protein/stabilizer  
**Temperature Limitation:** Store at 2-8°C. Do not freeze. Light sensitive material.  
**Batch Code:** Refer to vial  
**Use By:** Refer to vial  
**Contains sodium azide**

### Description

The HIP1 monoclonal antibody reacts with the human CD42b molecule, a 135 kDa transmembrane protein also known as platelet gpIb.

### Applications Reported

The HIP1 antibody has been reported for use in flow cytometric analysis.

### Applications Tested

This HIP1 antibody has been pre-titrated and tested by flow cytometric analysis of human platelets. This can be used at 5  $\mu$ L (1  $\mu$ g) per test. A test is defined as the amount ( $\mu$ g) of antibody that will stain a cell sample in a final volume of 100  $\mu$ L. Cell number should be determined empirically but can range from  $10^5$  to  $10^8$  cells/test.

### References

Takahashi R, Sekine N, Nakatake T. Influence of Monoclonal Antiplatelet Glycoprotein Antibodies on In Vitro Human Megakaryocyte Colony Formation and Proplatelet Formation. *Blood*. 1999 Mar 15;93(6):1951-8. (FA, PubMed)

Gohda F, Uchiumi H, Handa H, Matsushima T, Tsukamoto N, Morita K, Amagai H, Murakami M, Murakami H, Nojima Y, Karasawa M. Identification of inherited macrothrombocytopenias based on mean platelet volume among patients diagnosed with idiopathic thrombocytopenia. *Thromb Res*. 2007;119(6):741-6. (FC, PubMed)

George NP, Wei Q, Shin PK, Konstantopoulos K, Ross JM. Staphylococcus aureus adhesion via Spa, ClfA, and SdrCDE to immobilized platelets demonstrates shear-dependent behavior. *Arterioscler Thromb Vasc Biol*. 2006 Oct;26(10):2394-400. (FA, PubMed)

Schlossman, S., L. Bloumsell, et al. eds (1995). *Leucocyte Typing V: White Cell Differentiation Antigens*. Oxford University Press. New York.

### Related Products

11-4714 Mouse IgG1 K Isotype Control FITC (P3.6.2.8.1)

Not for further distribution without written consent.

Copyright © 2000-2012 eBioscience, Inc.

Tel: 888.999.1371 or 858.642.2058 • Fax: 858.642.2046 • [www.ebioscience.com](http://www.ebioscience.com) • [info@ebioscience.com](mailto:info@ebioscience.com)

---

## Anti-Human CD42b FITC

**Catalog Number:** 11-0429

**RUO: For Research Use Only. Not for use in diagnostic procedures.**

---

12-0419 Anti-Human CD41a PE (HIP8)

---

Not for further distribution without written consent.

Copyright © 2000-2012 eBioscience, Inc.

Tel: 888.999.1371 or 858.642.2058 • Fax: 858.642.2046 • [www.ebioscience.com](http://www.ebioscience.com) •  
[info@ebioscience.com](mailto:info@ebioscience.com)