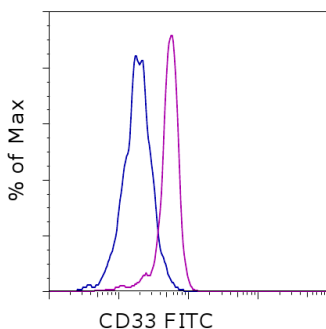


## Anti-Human CD33 FITC

**Catalog Number:** 11-0338

**Also known as:** Sialic Acid-Binding Immunoglobulin-Like Lectin 3, SIGLEC3

**RUO: For Research Use Only. Not for use in diagnostic procedures.**



Staining of normal human peripheral blood cells with Mouse IgG1 kappa Isotype Control FITC (cat. 11-4714) (blue histogram) or Anti-Human CD33 FITC (purple histogram). Cells in the monocyte gate were used for analysis.

### Product Information



**Contents:** Anti-Human CD33 FITC

**Catalog Number:** 11-0338

**Clone:** WM-53 (WM53)

**Concentration:** 5  $\mu$ L (0.5  $\mu$ g)/test

**Host/Isotype:** Mouse IgG1, kappa

**HLDA Workshop:** VI M505



**Formulation:** aqueous buffer, 0.09% sodium azide, may contain carrier protein/stabilizer

**Temperature Limitation:** Store at 2-8°C. Do not freeze. Light sensitive material.

**Batch Code:** Refer to vial

**Use By:** Refer to vial

### Description

The WM-53 monoclonal antibody reacts with human CD33, also known as GP67 and P67, a 67 kDa type I transmembrane glycoprotein that is a member of the Siglec (sialic acid-binding Ig superfamily lectin) family. It is highly specific to the hematopoietic compartment and is expressed on monocytes, activated T cells, granulocytes, myeloid progenitors, and mast cells.

### Applications Reported

The WM-53 (WM53) antibody has been reported for use in flow cytometric analysis.

### Applications Tested

This WM-53 (WM53) antibody has been pre-titrated and tested by flow cytometric analysis of normal human lysed whole blood. This can be used at 5  $\mu$ L (0.5  $\mu$ g) per test. A test is defined as the amount ( $\mu$ g) of antibody that will stain a cell sample in a final volume of 100  $\mu$ L. Cell number should be determined empirically but can range from  $10^5$  to  $10^8$  cells/test.

### References

Favaloro EJ, Bradstock KF, Kabral A, Grimsley P, Berndt MC. 1987 Characterization of monoclonal antibodies to the human myeloid-differentiation antigen, 'gp67' (CD-33). Dis Markers. 5(4):215-25.

### Related Products

11-4714 Mouse IgG1 K Isotype Control FITC (P3.6.2.8.1)

Not for further distribution without written consent.

Copyright © 2000-2012 eBioscience, Inc.

Tel: 888.999.1371 or 858.642.2058 • Fax: 858.642.2046 • [www.ebioscience.com](http://www.ebioscience.com) •  
[info@ebioscience.com](mailto:info@ebioscience.com)