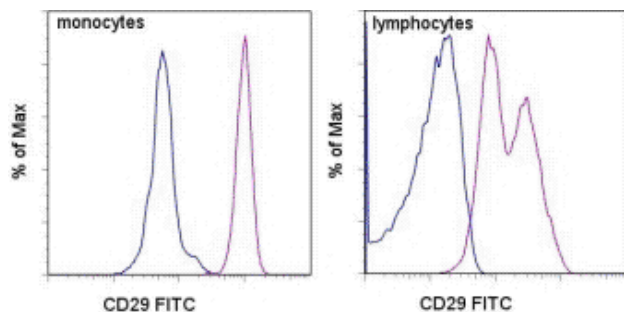


## Anti-Human CD29 (Integrin beta 1) FITC

**Catalog Number:** 11-0299

**Also Known As:** Fibronectin Receptor Beta

**RUO: For Research Use Only. Not for use in diagnostic procedures.**



Staining of normal human peripheral blood cells with Mouse IgG1 kappa Isotype Control FITC (cat. 11-4714) (blue histogram) or Anti-Human CD29 FITC (purple histogram). Cells in the monocyte (left) or lymphocyte (right) gates were used for analysis.

### Product Information

**Contents:** Anti-Human CD29 (Integrin beta 1) FITC


**REF** **Catalog Number:** 11-0299

**Clone:** TS2/16


**Concentration:** 5 µL (0.25 µg)/test

**Host/Isotype:** Mouse IgG1, kappa

**Formulation:** aqueous buffer, 0.09% sodium azide, may contain carrier protein/stabilizer

 **Temperature Limitation:** Store at 2-8°C. Do not freeze. Light sensitive material.

**LOT** **Batch Code:** Refer to Vial

 **Use By:** Refer to Vial

 **Caution, contains Azide**

### Description

The TS2/16 monoclonal antibody reacts with human CD29, also known as integrin beta 1, an approximately 130 kDa single-pass transmembrane glycoprotein. CD29 complexes with one of nine integrin alpha subunits to form the very late antigen (VLA) subfamily of adhesion molecules. Integrin heterodimers containing CD29 are involved in cell-cell and cell-matrix adhesion. CD29 is expressed broadly on lymphocytes and monocytes, with lower levels of expression on granulocytes. The TS2/16 antibody has been found to possess activating activity for beta 1 integrins.

### Applications Reported

This TS2/16 antibody has been reported for use in flow cytometric analysis.

### Applications Tested

This TS2/16 antibody has been pre-titrated and tested by flow cytometric analysis of normal human peripheral blood cells. This can be used at 5 µL (0.25 µg) per test. A test is defined as the amount (µg) of antibody that will stain a cell sample in a final volume of 100 µL. Cell number should be determined empirically but can range from 10<sup>5</sup> to 10<sup>8</sup> cells/test.

### References

Weber C, Alon R, Moser B, Springer TA. Sequential regulation of alpha4beta1 and alpha5beta1 integrin avidity by CC chemokines in monocytes: implications for transendothelial chemotaxis. *J Cell Biol.* 1996 Aug;134(4):1063-73. (**TS2/16**, FA, PubMed)

Hemler ME, Sanchez-Madrid F, Flotte TJ, Krensky AM, Burakoff SJ, Bhan AK, Springer TA, Strominger JL. Glycoproteins of 210,000 and 130,000 M.W. on activated T cells: cell distribution and antigenic relation to components on resting cells and T cell lines. *J Immunol.* 1984 Jun;132(6):3011-8. (**TS2/16**, IP, IHC, PubMed)

Sanchez-Madrid F, Krensky AM, Ware CF, Robbins E, Strominger JL, Burakoff SJ, Springer TA. Three distinct antigens associated with human T-lymphocyte-mediated cytotoxicity: LFA-1, LFA-2, and LFA-3. *Proc Natl Acad Sci U S A.* 1982 Dec;79(23):7489-93. (**TS2/16**, IP, FA, PubMed)

### Related Products

11-4714 Mouse IgG1 K Isotype Control FITC (P3.6.2.1)

Not for further distribution without written consent.

Copyright © 2000-2010 eBioscience, Inc.

Tel: 888.999.1371 or 858.642.2058 • Fax: 858.642.2046 • [www.eBioscience.com](http://www.eBioscience.com) • [info@eBioscience.com](mailto:info@eBioscience.com)