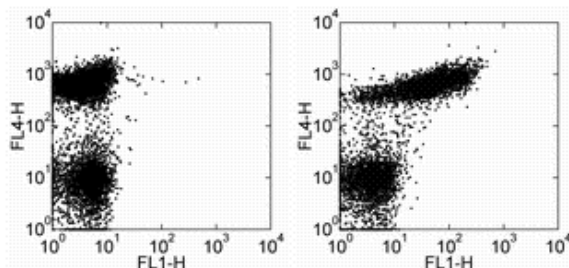


## Anti-Mouse CD21/CD35 FITC

**Catalog Number:** 11-0212

**Also Known As:** CR2/CR1, C3DR

**RUO: For Research Use Only. Not for use in diagnostic procedures.**



Staining of C57BL/6 splenocytes with Anti-Human/Mouse CD45R (B220) APC (cat. 17-0452) and 0.25 ug of Rat IgG2a K Isotype Control FITC (cat. 11-4321) (left) or 0.25 ug of Anti-Mouse CD21/CD35 FITC (right). Total viable cells were used for analysis.

### Product Information

**Contents:** Anti-Mouse CD21/CD35 FITC


**REF** **Catalog Number:** 11-0212

**Clone:** eBio4E3 (4E3)

**Concentration:** 0.5 mg/mL

**Host/Isotype:** Rat IgG2a, lambda

**Formulation:** aqueous buffer, 0.09% sodium azide, may contain carrier protein/stabilizer

 **Temperature Limitation:** Store at 2-8°C. Do not freeze. Light sensitive material.

**LOT** **Batch Code:** Refer to Vial

 **Use By:** Refer to Vial

 **Caution, contains Azide**

### Description

The monoclonal antibody eBio4E3 reacts with an epitope shared by mouse CD21 (CR2) and CD35 (CR1). CD21 and CD35 are alternatively spliced transcripts from the Cr2 gene, which result in cell-surface proteins of 145 and 190 kDa, respectively. CD21 and CD35 are expressed by mature B cells, but not on thymocytes, peripheral T cells, erythrocytes or platelets. Furthermore, there is little evidence which demonstrates their expression on macrophages. CD21 is a receptor for complement component C3d and Epstein-Barr virus (EBV), and in association with CD19 and CD81, CD21 also participates in B-cell activation through the B cell receptor. Cr2 deficient mice display impaired inflammatory and humoral immune responses *in vivo*. The anti-mouse CD21/35 monoclonal antibody clones eBio4E3 and eBio8D9 do not cross-block each other suggesting that they bind to different epitopes.

### Applications Reported

This eBio4E3 (4E3) antibody has been reported for use in flow cytometric analysis.

### Applications Tested

This eBio4E3 (4E3) antibody has been tested by flow cytometric analysis of mouse splenocytes. This can be used at less than or equal to 0.5 µg per test. A test is defined as the amount (µg) of antibody that will stain a cell sample in a final volume of 100 µL. Cell number should be determined empirically but can range from 10<sup>5</sup> to 10<sup>8</sup> cells/test. It is recommended that the antibody be carefully titrated for optimal performance in the assay of interest.

### References

Kozono Y, Abe R, Kozono H, Kelly RG, Azuma T, and Holers VM. 1998. Cross-linking CD21/CD35 or CD19 increases both B7-1 and B7-2 expression on murine splenic B cells. *Journal of Immunology*. 160: 1565-1572. (8D9, FA, PubMed)

Martin, B.K., and J.H. Weis. 1993. Murine macrophages lack expression of the Cr2-145 (CR2) and Cr2-190 (CR1) gene products. *Eur. J. Immunol.* 23: 3037-3042.

### Related Products

11-4321 Rat IgG2a K Isotype Control FITC (eBR2a)

16-0211 Anti-Mouse CD21/CD35 Functional Grade Purified (eBio8D9 (8D9))

17-0452 Anti-Human/Mouse CD45R (B220) APC (RA3-6B2)

Not for further distribution without written consent.

Copyright © 2000-2010 eBioscience, Inc.

Tel: 888.999.1371 or 858.642.2058 • Fax: 858.642.2046 • [www.eBioscience.com](http://www.eBioscience.com) • [info@eBioscience.com](mailto:info@eBioscience.com)