

CLIP-Surface™ 488



1-800-632-7799
info@neb.com
www.neb.com

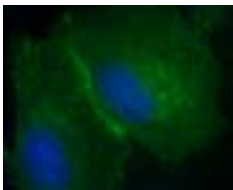


S9232S 007100712070

S9232S

50 nmol Lot: 0071007

Store at: -20°C Exp:7/12



Live CHO-K1 cells transiently transfected with pCLIP-NK1R™. Cells were labeled with CLIP-Surface 488™ (green) for 60 minutes and counterstained with Hoechst 33342 (blue).

Introduction

CLIP-Surface™ 488 is a photostable green fluorescent substrate that can be used to label CLIP-tag™ fusion proteins on the surface of living cells. This cell impermeable substrate (BC-488) is based on ATTO-TEC dye ATTO 488 and is suitable for standard fluorescein filter sets. It has an excitation maximum at 506 nm and emission maximum at 526 nm. This package includes 50 nmol of CLIP-Surface 488 substrate, sufficient to make 10 ml of a 5 µM CLIP-tag™ fusion protein labeling solution.

CLIP-tag is a novel tool for protein research, allowing the specific, covalent attachment of virtually any molecule to a protein of interest. CLIP-tag is a small polypeptide based on mammalian O⁶-alkylguanine-DNA-alkyltransferase (AGT). CLIP-tag substrates are derivatives of benzylcytosine (BC). In the labeling reaction, the substituted benzyl group of the substrate is covalently attached to the reactive cysteine of CLIP-tag forming a stable thioether link. Although CLIP-tag is based on the same protein as SNAP-tag®, the benzylcytosine substrates form a separate class of substrates, different from the benzylguanine substrates recognized by SNAP-tag. CLIP-tag and SNAP-tag can be used for orthogonal simultaneous labeling.

There are two steps to using this system: sub-cloning and expression of the protein of interest as a CLIP-tag fusion, and labeling of the fusion with the CLIP-tag substrate of choice. Expression of CLIP-tag fusion proteins is described in the documentation supplied with CLIP-tag plasmids. The labeling of the fusion proteins on the cell surface with the CLIP-tag substrate is described below.

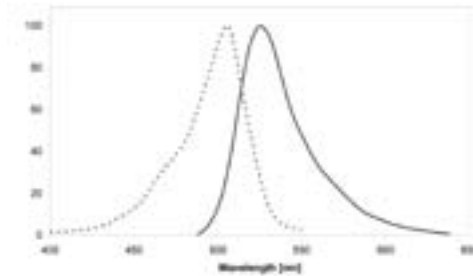


Figure 1. Excitation (dotted line) and emission (full line) spectra of CLIP-Surface 488 coupled to CLIP-tag in buffer at pH 7.5

Materials Required but not Supplied:

Cells expressing CLIP-fusion proteins. Your protein of interest can be expressed with the CLIP-tag as either an N- or a C-terminal fusion, but note that the tag needs to be exposed to the extracellular surface of the plasma membrane for labeling with CLIP-Surface 488

Tissue culture materials and media

Transfection reagents

Fluorescence microscope with suitable filter set
DMSO

Storage

CLIP-Surface 488 should be stored at -20°C (long term) or at 4°C in the dark (short term, less than 4 weeks). Protect the substrate from light and moisture. With proper storage at -20°C the substrate should be stable for at least two years dry or 3 months dissolved in DMSO.

Quality Controls

Purity and Characterization: Purity of CLIP-Surface 488 was determined to be 98% by HPLC analysis. Molecular weight [M+2H]⁺ was determined by MS to be 802.2 (802 expected).

In vitro Protein Labeling: Reaction of CLIP-Surface 488 (10 µM) with purified CLIP-tag protein (5 µM) *in vitro*, followed by mass spec analysis, indicated an efficiency of labeling of 95%.

Cellular Protein Labeling: Cells transfected with CLIP-tag vectors expressing NK1R (cell surface) were labeled with 5 µM CLIP-Surface 488 for 60 minutes, and visualized by confocal microscopy. Only the surface target was efficiently labeled.

Instructions for Cellular Labeling

CLIP-tag fusion proteins can be expressed by transient or stable transfection. For expression of fusion proteins with the CLIP-tag refer to instructions supplied with the CLIP-tag plasmids. For cell culture and transfection methods, refer to established protocols.

Dissolve one vial of CLIP-tag substrate (50 nmol) in 50 µl of DMSO to yield a stock solution of 1 mM CLIP-tag substrate. Mix by vortexing for 10 minutes until all the CLIP-tag substrate is dissolved.

Protocol for Labeling Reaction:

1. Dilute the labeling stock solution 1:200 in medium to yield a labeling medium of 5 µM dye substrate. Mix dye with medium thoroughly by pipetting up and down 10 times (necessary for reducing backgrounds). For best performance, add the CLIP-tag substrate to complete medium, including serum (0.5% BSA can be used for experiments carried out in serum-free media). Do not prepare more medium with CLIP-tag substrate than you will consume within one hour.
2. Replace the medium on the cells expressing a CLIP-tag fusion protein with the CLIP-Surface labeling medium and incubate at 37°C, 5% CO₂ for 60 minutes.

Number of Wells in Plate	Recommended Volume for Cell Labeling
6	1 ml
12	500 µl
24	250 µl
48	100 µl
96	50 µl

These recommendations are for culturing cells in polystyrene plates. For confocal imaging, we recommend using chambered coverglass such as Lab-Tek II Chambered Coverglass which is available in a 1, 2, 4 or 8 well format from Nunc (www.nuncbrand.com).

3. Wash the cells 3 times with tissue culture medium with serum.

4. Image the cells with an appropriate filter set. CLIP-tag fusion proteins labeled with CLIP-Surface 488 should have an excitation maximum at 506 nm and an emission maximum at 526 nm, and can be imaged with standard fluorescein filter sets.

We recommend routinely labeling one well of non-transfected or mock-transfected cells as a negative control.

Notes

Blocking unreacted CLIP-tag with CLIP-Cell™ Block

In many cases the labeling of a non-transfected cell sample or a mock-transfected cell sample will be completely sufficient as a control. In some cases, however, it may be desirable to block the CLIP-tag activity in a cell sample expressing the CLIP-tag fusion protein to generate a control. This can be achieved using a nonfluorescent CLIP-tag substrate, CLIP-Cell Block (bromothienylcytosine, BTC). CLIP-Cell Block may also be used in pulse-chase experiments to block the CLIP-tag reactivity during the chase between two pulse-labeling steps. A protocol for blocking is included with CLIP-Cell Block (NEB #S9220).

Optimizing Labeling

Optimal substrate concentrations and reaction times range from 1–10 µM and 30–60 minutes, respectively, depending on experimental conditions and expression levels of the CLIP-tag fusion protein. Best results are usually obtained at concentrations between 1 and 5 µM substrate and 60 minutes reaction time. Increasing substrate concentration and reaction time usually results in a higher background and does not necessarily increase the signal to background ratio.

Stability of Signal

The turnover rates of the CLIP-tag fusion protein under investigation may vary widely depending on the fusion partner. We have seen half-life values ranging from less than one hour to more than 12 hours. Where protein turnover is rapid, we recommend analyzing the cells under the microscope immediately after the labeling reaction or, if the application allows it, fixing the cells directly after labeling.

(see other side)

Fixation of Cells

After labeling the CLIP-tag fusion proteins, the cells can be fixed with standard fixation methods such as para-formaldehyde, ethanol, methanol, methanol/acetone etc., without loss of signal. We are not aware of any incompatibility of the CLIP-tag label with any fixation method.

Counterstaining

Cells can be counterstained with any live-cell dye that is compatible with the fluorescent properties of the CLIP-tag substrate for simultaneous microscopic detection. We routinely add 5 μ M Hoechst 33342 to the medium prior to the final 30 minutes incubation (Step 3) as a DNA counterstain for nuclear visualization. Counterstaining of cells is also possible after fixation and permeabilization.

Immunocytochemistry

Antibody labeling can be performed after CLIP-tag labeling and fixation of the cells according to standard protocols without loss of the CLIP-tag signal. The fixation conditions should be selected based on experience with the protein of interest. For example, some fixation methods destroy epitopes of certain proteins and therefore do not allow antibody staining afterwards.

Troubleshooting for Cellular Labeling

No Labeling

If no labeling is seen, the most likely explanation is that the fusion protein is not expressed. Verify your transfection method to confirm that the cells contain the fusion gene of interest. If this is confirmed, check for expression of the CLIP-Surface 488 fusion protein via Western Blot using Anti-SNAP-tag Antibody (NEB #P9310). This antibody shows high crossreactivity with the CLIP-tag and can be used for Western Blot detection. Alternatively, CLIP-Vista Green (NEB #S9235) can be used to confirm presence of CLIP-tag fusion in cell extracts following SDS-PAGE, without the need for Western blotting.

Weak Labeling

Weak labeling may be caused by insufficient exposure of the fusion protein to the substrate. Try increasing the concentration of CLIP-tag substrate and/or the incubation time, following the guidelines described above. Alternatively, the protein may be poorly expressed and/or turn over rapidly. If the protein has limited stability in the cell, it may help to analyze the samples immediately after labeling.

High Background

Background fluorescence may be controlled by reducing the concentration of CLIP-tag substrate used, and by shortening the incubation time. The presence of fetal calf serum or BSA during the labeling incubation should reduce non-specific binding of substrate to surfaces.

Signal Strongly Reduced After Short Time

If the fluorescence signal decreases rapidly, it may be due to instability of the fusion protein. The signal may be stabilized by fixing the cells. Alternatively, try switching the CLIP-tag from the N-terminus to the C-terminus or vice versa.

Photobleaching is generally not a problem as the CLIP-Surface 488 substrate is very photostable. However, if you experience problems with photobleaching, addition of a commercially available anti-fade reagent may be helpful.

Instructions for Labeling of Proteins *in vitro*:

1. Dissolve the vial of CLIP-Surface 488 substrate (50 nmol) in 50 μ l of DMSO to yield a stock solution of 1 mM CLIP-tag substrate. Mix by vortexing for 10 minutes until all the CLIP-tag substrate is dissolved. Dilute this 1 mM stock solution 1:4 in fresh DMSO to yield a 250 μ M stock for labeling proteins *in vitro*.
2. Set up the reactions, in order, as follows:

Component	Volume	Final Concentration
Deionized Water	32 μ l	
5X CLIP-tag Reaction Buffer	10 μ l	1X
50 mM DTT	1 μ l	1 mM
50 μ M CLIP-tag Purified Protein	5 μ l	5 μ M
250 μ M CLIP-tag Substrate	2 μ l	10 μ M
Total Volume	50 μ l	

3. Incubate in the dark for 60 minutes at 37°C.
4. Run sample on an SDS-PAGE gel and detect using a fluorescent gel scanner or store samples at -20°C or -80°C in the dark.

Removal of Unreacted Substrate (optional)

After the labeling reaction the unreacted substrate can be separated from the labeled CLIP-tag fusion protein by gel filtration or dialysis. Please refer to the vendor's instructions for the separation tools you are using.

Notes for Labeling *in vitro*

We recommend the routine addition of 1 mM DTT to all buffers used for handling, labeling and storage of the CLIP-tag. The stability of the CLIP-tag is improved in the presence of reducing agents; however it can also be labeled in their absence, if handling at temperatures above 4°C is minimized.

CLIP-tag fusion proteins can be purified before labeling, but the labeling reaction also works in non-purified protein solutions (including cell lysates).

Troubleshooting for Labeling *in vitro*

Solubility

If solubility problems occur with your CLIP-tag fusion protein, we recommend testing a range of pH (pH 5.0–pH 10.0) and ionic strengths. The salt concentration may also need to be optimized for your particular fusion protein (50–250 mM).

Loss of Protein Due to Aggregation or Sticking to Tube

If stickiness of the fusion protein is a problem we recommend adding Tween 20 at a final concentration of 0.05% to 0.1%. The CLIP-tag activity is not affected by this concentration of Tween 20.

Incomplete Labeling

If exhaustive labeling of a protein sample is not achieved using the recommended conditions, try the following protocol modifications: Increase the incubation time to two hours total at 25°C or to 24 hours at 4°C; or halve the volume of protein solution labeled. Both approaches may be combined. If you still have poor labeling results, we recommend checking the activity of the CLIP-tag using CLIP-Vista Green.

If the CLIP-tag fusion has been stored in the absence of DTT or other reducing agent, or has been stored at 4°C for a prolonged period, its activity may be compromised. Include 1 mM DTT in all solutions of the CLIP-tag fusion protein, and store the fusion protein at -20°C.

Using less than the recommended amount of substrate stock solution can significantly slow down the reaction rate.

Loss of Activity of Protein of Interest

If your fusion protein is particularly sensitive to degradation or to loss of activity, you can try reducing the labeling time or decreasing the labeling temperature. If you label at 4°C we recommend overnight incubation.

Notice to Buyer/User: The Buyer/User has a non-exclusive license to use this system or any component thereof for **RESEARCH AND DEVELOPMENT PURPOSES ONLY**. Commercial use of this system or any components thereof requires a license from New England Biolabs, Inc., 240 County Road Ipswich, MA 01938. For detailed information, see: www.neb.com/cia/legal.