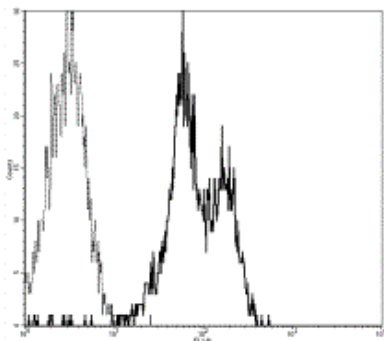


Anti-Human CD11a FITC

Catalog Number: 11-0119

Also Known As: Integrin alpha L, ITGAL, Lymphocyte Function-Associated Antigen, Type 1 alpha (LFA-1 alpha), LFA1A


RUO: For Research Use Only



Staining of normal human peripheral blood cells with Anti-Human CD11a FITC.

Product Information

Contents: Anti-Human CD11a FITC

 Catalog Number: 11-0119


Clone: HI111

Concentration: 5 µl (1 µg)/test

Host/Isotype: Mouse IgG1, κ


HLDA Workshop: IV N231

Formulation: Phosphate buffer pH 7.2,
150 mM NaCl, 0.09% NaN₃, 0.2% BSA

 Temperature Limitation: Store at 2-8°C. Do not freeze. Light sensitive material.

 Batch Code: Refer to Vial

 Use By: Refer to Vial

 Caution, contains Azide

Description

The HI111 monoclonal antibody reacts with human CD11a, the 180 kDa integrin α_L , also known as the lymphocyte function associated antigen-1 (LFA-1) α chain. LFA-1, formed by non-covalent association of CD11a with CD18 (integrin β_2), serves as an important adhesion molecule involved in lymphocyte and granulocyte function. CD54 (ICAM-1), CD102 (ICAM-2), and CD50 (ICAM-3) are ligands for LFA-1. CD11a is expressed by all leukocytes.

Applications Reported

For research use only, not for diagnostic or therapeutic use. The HI111 antibody has been reported for use in flow cytometric analysis.

Applications Tested

The HI111 antibody has been pre-titrated and tested by flow cytometric analysis of human peripheral blood leukocytes. This can be used at 5 µl (1 µg)/per test. A test is defined as the amount (µg)/test of antibody that will stain a cell sample in a final volume of 100 µL. Cell number should be determined empirically but can range from 10⁵ to 10⁸ cells/test.

References

Kapsogeorgou EK, Dimitriou ID, Abu-Helu RF, Moutsopoulos HM, Manoussakis MN. Activation of epithelial and myoepithelial cells in the salivary glands of patients with Sjögren's syndrome: high expression of intercellular adhesion molecule-1 (ICAM.1) in biopsy specimens and cultured cells. Clin Exp Immunol. 2001 Apr;124(1):126-33. (HI111, IHC frozen)

Knapp, W., B. Dorken, et al. eds 1989. Leucocyte Typing IV: White Cell Differentiation Antigens. Oxford University Press. New York.

Related Products

11-4714 Mouse IgG1 K Isotype Control FITC