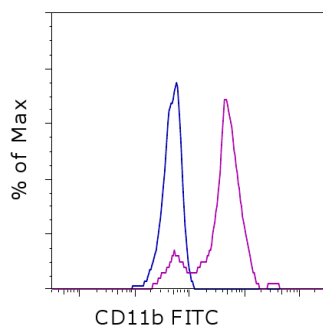


Anti-Human CD11b FITC

Catalog Number: 11-0118

Also known as: Integrin alpha M, Mac-1 alpha, Complement Receptor 3 alpha

RUO: For Research Use Only. Not for use in diagnostic procedures.



Staining of normal human peripheral blood cells with Mouse IgG1 K Isotype Control FITC (cat. 11-4714) (blue histogram) or Anti-Human CD11b FITC (purple histogram).

Product Information



Contents: Anti-Human CD11b FITC

Catalog Number: 11-0118

Clone: ICRF44

Concentration: 5 μ L (0.5 μ g)/test

Host/Isotype: Mouse IgG1, kappa

HLDA Workshop: IV M047



LOT



Formulation: aqueous buffer, 0.09% sodium azide, may contain carrier protein/stabilizer

Temperature Limitation: Store at 2-8°C. Do not freeze. Light sensitive material.

Batch Code: Refer to vial

Use By: Refer to vial

Caution, contains Azide

Description

The ICRF44 monoclonal antibody reacts with human CD11b, a 165 kDa adhesion molecule. CD11b associated with integrin beta2 (CD18) is expressed on the surface of monocytes, granulocytes, activated lymphocytes and a subset of NK cells. CD11b is a receptor for intercellular adhesion molecule family members CD54, CD102 and CD50 as well as for iC3b. These adhesions are crucial in cell-cell and cell-matrix interactions.

Applications Reported

This ICRF44 antibody has been reported for use in flow cytometric analysis.

Applications Tested

This ICRF44 antibody has been pre-titrated and tested by flow cytometric analysis of human peripheral blood leukocytes. This can be used at 5 μ L (0.5 μ g) per test. A test is defined as the amount (μ g) of antibody that will stain a cell sample in a final volume of 100 μ L. Cell number should be determined empirically but can range from 10^5 to 10^8 cells/test.

References

Moreau A, Hill M, Thébault P, Deschamps JY, Chiffolleau E, Chauveau C, Moullier P, Anegon I, Alliot-Licht B, Cuturi MC Tolerogenic dendritic cells actively inhibit T cells through heme oxygenase-1 in rodents and in nonhuman primates. *FASEB J.* 2009 May 6. (FC, Cynomolgus macaques)

Sotiriou SN, Orlova VV, Al-Fakhri N, Ihanus E, Economopoulou M, Isermann B, Bdeir K, Nawroth PP, Preissner KT, Gahmberg CG, Koschinsky ML, Chavakis T. Lipoprotein(a) in atherosclerotic plaques recruits inflammatory cells through interaction with Mac-1 integrin. *FASEB J.* 2006 Mar;20(3):559-61. (ICRF44, IHC, frozen)

Sengoku K, Takuma N, Miyamoto T, Horikawa M, Ishikawa M. Integrins are not involved in the process of human sperm-oolemmal fusion. *Hum Reprod.* 2004 Mar;19(3):639-44. (ICRF44, IF, PFA fixed)

Knapp, W., B. Dorken, et al. eds. (1989). *Leucocyte Typing IV: White Cell Differentiation Antigens*. Oxford University

Not for further distribution without written consent.

Copyright © 2000-2012 eBioscience, Inc.

Tel: 888.999.1371 or 858.642.2058 • Fax: 858.642.2046 • www.ebioscience.com • info@ebioscience.com

Anti-Human CD11b FITC

Catalog Number: 11-0118

Also known as: Integrin alpha M, Mac-1 alpha, Complement Receptor 3 alpha

RUO: For Research Use Only. Not for use in diagnostic procedures.

Press. New York.

Related Products

11-0112 Anti-Mouse CD11b FITC (M1/70)

11-0113 Anti-Human CD11b (activation epitope) FITC (CBRM1/5)

11-4714 Mouse IgG1 K Isotype Control FITC (P3.6.2.8.1)