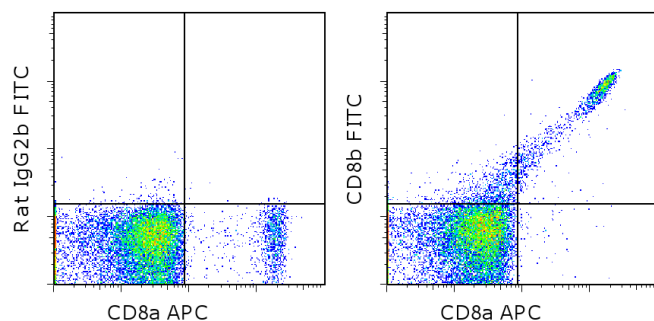


Anti-Mouse CD8b FITC

Catalog Number: 11-0083

Also known as: CD8 beta, Ly-3, Ly-C, Lyt-3

RUO: For Research Use Only. Not for use in diagnostic procedures.



Staining of BALB/c splenocytes with Anti-Mouse CD8a APC (cat. 17-0081) and 0.125 ug of Rat IgG2b kappa Isotype Control FITC (cat. 11-4031) (left) or 0.125 ug of Anti-Mouse CD8b FITC (right). Cells in the lymphocyte gate were used for analysis.

Product Information



Contents: Anti-Mouse CD8b FITC

Catalog Number: 11-0083

Clone: eBioH35-17.2 (H35-17.2)

Concentration: 0.5 mg/mL

Host/Isotype: Rat IgG2b, kappa



Formulation: aqueous buffer, 0.09% sodium azide, may contain carrier protein/stabilizer

Temperature Limitation: Store at 2-8°C. Do not freeze. Light sensitive material.

Batch Code: Refer to vial

Use By: Refer to vial

Contains sodium azide

Description

The eBioH35-17.2 monoclonal antibody reacts with the mouse CD8 beta molecule. The CD8 beta chain associates with the CD8 alpha chain to form the CD8 alpha/beta heterodimer expressed on the surface of a majority of thymocytes, and on peripheral cytotoxic alpha beta TCR T cells. CD8 binds to MHC class I and plays a role in T cell development and activation of mature T cells.

Applications Reported

This eBioH35-17.2 (H35-17.2) antibody has been reported for use in flow cytometric analysis.

Applications Tested

This eBioH35-17.2 (H35-17.2) antibody has been tested by flow cytometric analysis of mouse splenocytes. This can be used at less than or equal to 0.25 µg per test. A test is defined as the amount (µg) of antibody that will stain a cell sample in a final volume of 100 µl. Cell number should be determined empirically but can range from 10⁵ to 10⁸ cells/test. It is recommended that the antibody be carefully titrated for optimal performance in the assay of interest.

References

Lefrancois L. Phenotypic complexity of intraepithelial lymphocytes of the small intestine. J Immunol. 1991 Sep 15;147(6):1746-51. (H35-17.2, FC, PubMed)

Ledbetter JA, Seaman WE, Tsu TT, Herzenberg LA. Lyt-2 and lyt-3 antigens are on two different polypeptide subunits linked by disulfide bonds. Relationship of subunits to T cell cytolytic activity. J Exp Med. 1981 Jun 1;153(6):1503-16.

Golstein P, Goridis C, Schmitt-Verhulst AM, Hayot B, Pierres A, van Agthoven A, Kaufmann Y, Eshhar Z, Pierres M. Lymphoid cell surface interaction structures detected using cytolysis-inhibiting monoclonal antibodies. Immunol Rev. 1982;68:5-42. Review.

Tarleton RL, Sun J, et al. 1994. Depletion of T-cell subpopulations results in exacerbation of myocarditis and

Not for further distribution without written consent.

Copyright © 2000-2012 eBioscience, Inc.

Tel: 888.999.1371 or 858.642.2058 • Fax: 858.642.2046 • www.ebioscience.com • info@ebioscience.com

Anti-Mouse CD8b FITC

Catalog Number: 11-0083

Also known as: CD8 beta, Ly-3, Ly-C, Lyt-3

RUO: For Research Use Only. Not for use in diagnostic procedures.

parasitism in experimental Chagas' disease. Infect Immun. 62(5):1820-9. (H35-17.2, IHC frozen, PubMed)

Thoma-Uszynski S, Emoto M, and Kaufmann SH. 1997. CD8alphaalpha T cells in lesions of Listeria monocytogenes-infected beta2m-deficient mice. Microb Pathog. 23(2):101-6. (H35-17.2, IHC frozen, PubMed)

Related Products

11-4031 Rat IgG2b K Isotype Control FITC

17-0081 Anti-Mouse CD8a APC (53-6.7)