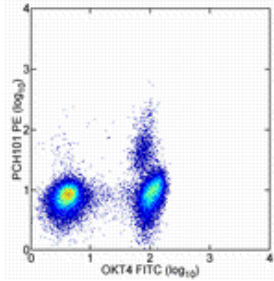


## Anti-Human CD4 FITC

**Catalog Number:** 11-0048

**Also Known As:** Leu-3, T4

**RUO: For Research Use Only. Not for use in diagnostic procedures.**



Staining of normal human peripheral blood cells with Anti-Human CD4 FITC followed by intracellular staining with Anti-Human Foxp3 PE (cat. 12-4776) using the Foxp3 Staining Buffers (cat. 00-5523). Cells in the lymphocyte gate were used for analysis.

### Product Information

**Contents:** Anti-Human CD4 FITC

**REF** **Catalog Number:** 11-0048

**Clone:** OKT4 (OKT-4)

**Concentration:** ug size: 0.5 mg/mL; test size: 5 uL (0.25 ug)/test

**Host/Isotype:** Mouse IgG2b, kappa

**Formulation:** aqueous buffer, 0.09% sodium azide, may contain carrier protein/stabilizer

**Temperature Limitation:** Store at 2-8°C. Do not freeze. Light sensitive material.

**LOT** **Batch Code:** Refer to Vial

**Use By:** Refer to Vial

**Caution, contains Azide**

### Description

The OKT4 monoclonal antibody reacts with human CD4, a 59 kDa cell surface glycoprotein expressed by the majority of thymocytes, a subpopulation of mature T cells (T-helper cells) and in low levels on monocytes. CD4 is a receptor for the human immunodeficiency virus (HIV). The OKT4 antibody recognizes a different epitope than the RPA-T4 monoclonal antibody, and these antibodies do not cross-block binding to each other's respective epitopes.

### Applications Reported

This OKT4 (OKT-4) antibody has been reported for use in flow cytometric analysis.

### Applications Tested

This OKT4 (OKT-4) antibody is offered in 2 formats:

-  $\mu$ g size: has been tested by flow cytometric analysis of human peripheral blood leukocytes. This can be used at less than or equal to 0.5  $\mu$ g per test. A test is defined as the amount ( $\mu$ g) of antibody that will stain a cell sample in a final volume of 100  $\mu$ L. Cell number should be determined empirically but can range from  $10^5$  to  $10^8$  cells/test. It is recommended that the antibody be carefully titrated for optimal performance in the assay of interest.

- test size: has been pre-titrated and tested by flow cytometric analysis of human peripheral blood leukocytes. This can be used at 5  $\mu$ L (0.25  $\mu$ g) per test. A test is defined as the amount ( $\mu$ g) of antibody that will stain a cell sample in a final volume of 100  $\mu$ L. Cell number should be determined empirically but can range from  $10^5$  to  $10^8$  cells/test.

### References

Bour S, Boulterice F, Wainberg MA. Inhibition of gp160 and CD4 maturation in U937 cells after both defective and productive infections by human immunodeficiency virus type 1. J Virol. 1991 Dec;65(12):6387-96. (OKT4, IP, PubMed)

Reinherz EL, Kung PC, Goldstein G, Schlossman SF. Separation of functional subsets of human T cells by a monoclonal antibody. Proc Natl Acad Sci. 1979 76(8): 4061-5.

### Related Products

11-4732 Mouse IgG2b K Isotype Control FITC

12-4776 Anti-Human Foxp3 PE (PCH101)

48-0088 Anti-Human CD8a eFluor® 450 (RPA-T8)

---

Not for further distribution without written consent.

Copyright © 2000-2012 eBioscience, Inc.

Tel: 888.999.1371 or 858.642.2058 • Fax: 858.642.2046 • [www.eBioscience.com](http://www.eBioscience.com) • [info@eBioscience.com](mailto:info@eBioscience.com)