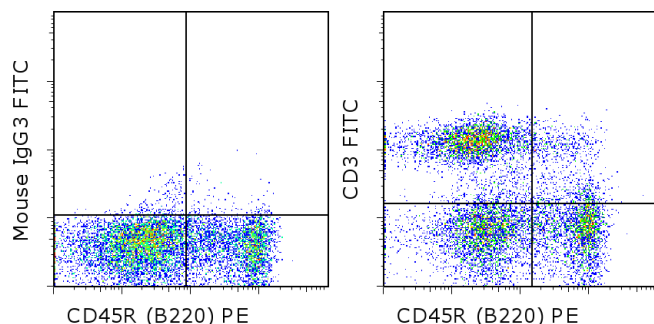


## Anti-Rat CD3 FITC

**Catalog Number:** 11-0030

**Also known as:** T3

**RUO: For Research Use Only. Not for use in diagnostic procedures.**



Staining of rat splenocytes with Anti-Rat CD45R (B220) PE (cat. 12-0460) and 0.25 ug of Mouse IgG3 Isotype Control FITC (cat. 11-4742) (left) or 0.25 ug of Anti-Rat CD3 FITC (right). Cells in the lymphocyte gate were used for analysis.

### Product Information

**Contents:** Anti-Rat CD3 FITC



**Catalog Number:** 11-0030

**Clone:** eBioG4.18 (G4.18)

**Concentration:** 0.5 mg/mL

**Host/Isotype:** Mouse IgG3, kappa

**Formulation:** aqueous buffer, 0.09% sodium azide, may contain carrier protein/stabilizer

**Temperature Limitation:** Store at 2-8°C. Do not freeze. Light sensitive material.

**Batch Code:** Refer to vial

**Use By:** Refer to vial

**Contains sodium azide**



### Description

The eBioG4.18 monoclonal antibody recognizes the rat CD3 protein. CD3 is a critical component of the T-cell receptor (TCR) and is a marker of the T-cell lineage. CD3 is a complex of several subunits and, upon binding of a TCR ligand, participates in transduction of signals from the TCR to the nucleus which results in a variety of cellular responses including transcription of IL-2 and clonal expansion. *in vitro*, immobilized G4.18 monoclonal antibody has been demonstrated to activate T cells, while soluble G4.18 inhibited allogeneic mixed-lymphocyte proliferative responses and cell-mediated cytotoxicity to allogeneic target cells. *in vivo*, G4.18 was demonstrated to induce long-term specific tolerance to an organ allograft.

### Applications Reported

This eBioG4.18 (G4.18) antibody has been reported for use in flow cytometric analysis.

### Applications Tested

This eBioG4.18 (G4.18) antibody has been tested by flow cytometric analysis of rat splenocytes. This can be used at less than or equal to 0.5 µg per test. A test is defined as the amount (µg) of antibody that will stain a cell sample in a final volume of 100 µL. Cell number should be determined empirically but can range from 10<sup>5</sup> to 10<sup>8</sup> cells/test. It is recommended that the antibody be carefully titrated for optimal performance in the assay of interest.

### References

Tran GT, Carter N, He XY, Spicer TS, Plain KM, Nicolls M, Hall BM, Hodgkinson SJ. Reversal of experimental allergic encephalomyelitis with non-mitogenic, non-depleting anti-CD3 mAb therapy with a preferential effect on T(h)1 cells that is augmented by IL-4. *Int Immunol.* 2001 Sep;13(9):1109-20. (G4.18, FC, FA, PubMed)

Brenan M, Rees DJ. Sequence analysis of rat integrin alphaE1 and alphaE2 subunits: tissue expression reveals phenotypic similarities between intraepithelial lymphocytes and dendritic cells in lymph. *Eur J Immunol.* 2000 Jun;30(6):1527-37.

Upham JW, Strickland DH, Bilyk N, Robinson BW, Holt PG. Alveolar macrophages from humans and rodents

Not for further distribution without written consent.

Copyright © 2000-2012 eBioscience, Inc.

Tel: 888.999.1371 or 858.642.2058 • Fax: 858.642.2046 • [www.ebioscience.com](http://www.ebioscience.com) • [info@ebioscience.com](mailto:info@ebioscience.com)

---

## **Anti-Rat CD3 FITC**

**Catalog Number:** 11-0030

**Also known as:** T3

**RUO: For Research Use Only. Not for use in diagnostic procedures.**

---

selectively inhibit T-cell proliferation but permit T-cell activation and cytokine secretion. *Immunology*. 1995 Jan;84(1):142-7.

Nicolls MR, Aversa GG, Pearce NW, Spinelli A, Berger MF, Gurley KE, Hall BM. Induction of long-term specific tolerance to allografts in rats by therapy with an anti-CD3-like monoclonal antibody. *Transplantation*. 1993 Mar;55(3):459-68. (**G4.18**, FC, IP, FA, PubMed)

### **Related Products**

11-4742 Mouse IgG3 Isotype Control FITC

12-0460 Anti-Rat CD45R (B220) PE (HIS24)