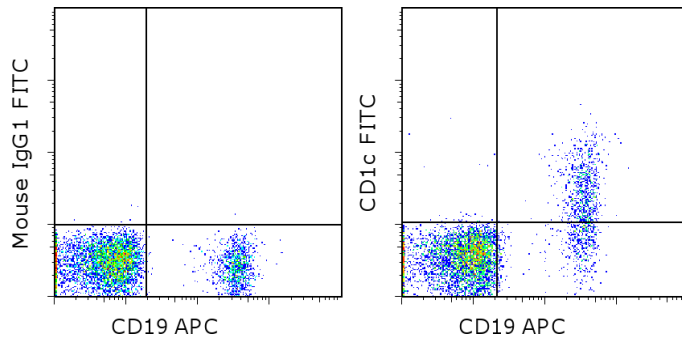


Anti-Human CD1c FITC

Catalog Number: 11-0015

Also known as: BDCA-1

RUO: For Research Use Only. Not for use in diagnostic procedures.



Staining of normal human peripheral blood cells with Anti-Human CD19 APC (cat. 17-0199) and Mouse IgG1 K Isotype Control FITC (cat. 11-4714) (left) or Anti-Human CD1c (right). Total viable cells were used for this analysis.

Product Information



Contents: Anti-Human CD1c FITC

Catalog Number: 11-0015

Clone: L161

Concentration: 5 μ L (0.06 μ g)/test

Host/Isotype: Mouse IgG1



Formulation: aqueous buffer, 0.09% sodium azide, may contain carrier protein/stabilizer

Temperature Limitation: Store at 2-8°C. Do not freeze. Light sensitive material.

Batch Code: Refer to vial



Use By: Refer to vial

Caution, contains Azide

Description

This L161 monoclonal antibody detects CD1c (also known as BDCA-1), a glycoprotein that is noncovalently linked to beta-2 microglobulin on thymocytes and antigen presenting cells such as dendritic and Langerhans cells. This molecule is also expressed on some circulating and marginal zone B cells, as well as in lymph nodes and germinal centers. CD1c is involved in the presentation of lipid antigens such as microbial fatty acids to effector T cells during the adaptive immune response. Finally, alternative splicing gives rise to three different isoforms of CD1c (soluble, membrane, and cytoplasmic/soluble isoforms).

Applications Reported

This L161 antibody has been reported for use in flow cytometric analysis, immunoprecipitation, and immunohistochemical staining.

Applications Tested

This L161 antibody has been pre-titrated and tested by flow cytometric analysis on normal human peripheral blood cells. This can be used at 5 μ L (0.06 μ g) per test. A test is defined as the amount (μ g) of antibody that will stain a cell sample in a final volume of 100 μ L. Cell number should be determined empirically but can range from 10^5 to 10^8 cells/test.

References

Barral DC, Brenner MB. CD1 antigen presentation: how it works. *Nat Rev Immunol.* 2007 Dec;7(12):929-41. Review.

Dzionic A, Fuchs A, Schmidt P, Cremer S, Zysk M, Miltenyi S, Buck DW, Schmitz J. BDCA-2, BDCA-3, and BDCA-4: three markers for distinct subsets of dendritic cells in human peripheral blood. *J Immunol.* 2000 Dec 1;165(11):6037-46.

del C Salamone M, Mendiguren AK, Salamone GV, Fainboim L. Membrane trafficking of CD1c on activated T cells. *J Leukoc Biol.* 2001 Oct;70(4):567-77.

Not for further distribution without written consent.

Copyright © 2000-2012 eBioscience, Inc.

Tel: 888.999.1371 or 858.642.2058 • Fax: 858.642.2046 • www.ebioscience.com •
info@ebioscience.com

Anti-Human CD1c FITC

Catalog Number: 11-0015

Also known as: BDCA-1

RUO: For Research Use Only. Not for use in diagnostic procedures.

Briken V, Jackman RM, Watts GF, Rogers RA, Porcelli SA. Human CD1b and CD1c isoforms survey different intracellular compartments for the presentation of microbial lipid antigens. *J Exp Med.* 2000 Jul 17;192(2):281-8.

Related Products

11-4714 Mouse IgG1 K Isotype Control FITC (P3.6.2.8.1)

12-0199 Anti-Human CD19 PE (HIB19)

17-0199 Anti-Human CD19 APC (HIB19)

Not for further distribution without written consent.

Copyright © 2000-2012 eBioscience, Inc.

Tel: 888.999.1371 or 858.642.2058 • Fax: 858.642.2046 • www.ebioscience.com •
info@ebioscience.com