

LITMUS™ 28i Vector



1-800-632-7799
info@neb.com
www.neb.com



N3528S 002120814081

N3528S

20 µg Lot: 0021208 Exp: 8/14
500 µg/ml Store at **-20°C**

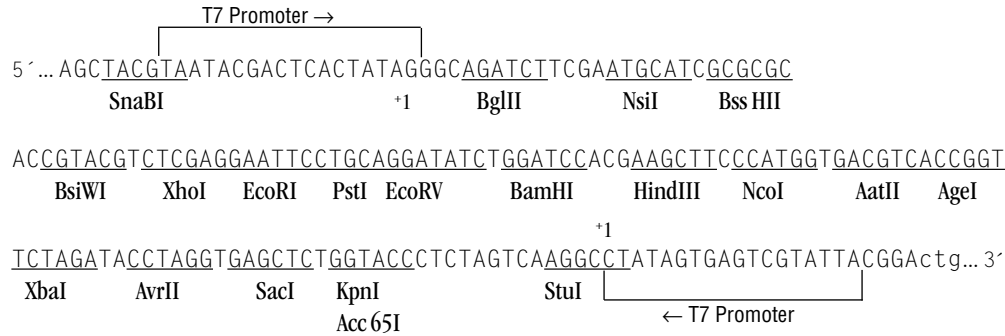
Description: LITMUS 28i is a multi-purpose cloning/*in vitro* transcription phagemid vector. The molecule is a small, double-stranded circle 2,823 base pairs in length (molecular weight = 1.8 x 10⁶ daltons).

Supplied in: 10 mM Tris-HCl (pH 8.0), 1 mM EDTA.

The key features of this vector are:

- Extensive set of restriction sites in polylinker, many with unique 4-base overhangs
- Blue/white selection
- Small (< 3 kb), high copy number
- Ampicillin resistance

LITMUS 28i Polylinker Region:



Preparation: LITMUS 28i is isolated from *E. coli* ER2738 by a standard plasmid purification procedure.

Note: Appropriate strains of *E. coli* containing the LITMUS 28i plasmid form blue colonies on X-gal plates; when a fragment is inserted in the polylinker, the colonies are white. Blue/white selection is best achieved by plating on a rich media (e.g. LB) supplemented with X-gal (40 µg/ml) and IPTG (0.1 mM).

Notice to Buyer/User: The Buyer/User has a non-exclusive license to use this vector for **RESEARCH PURPOSES ONLY**. * Commercial use of the LITMUS Vectors may require a license from New England Biolabs, Inc.

*Use of this vector for double-stranded RNA interference by For-Profit organizations may require a license from the Carnegie Institution of Washington. For further information, contact the Director of Administration and Finance at the Carnegie Institution of Washington at 1530 P Street, N.W., Washington D.C., 20005-1910. Tel 202-939-1118.

CERTIFICATE OF ANALYSIS

LITMUS™ 28i Vector



1-800-632-7799
info@neb.com
www.neb.com



N3528S 002120814081

N3528S

20 µg Lot: 0021208 Exp: 8/14
500 µg/ml Store at **-20°C**

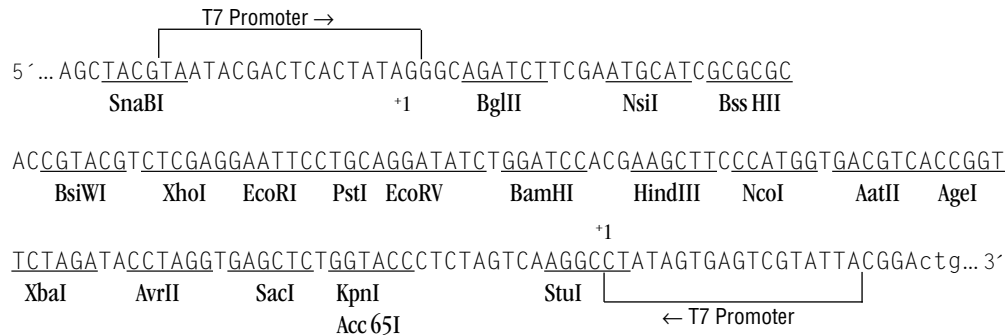
Description: LITMUS 28i is a multi-purpose cloning/*in vitro* transcription phagemid vector. The molecule is a small, double-stranded circle 2,823 base pairs in length (molecular weight = 1.8 x 10⁶ daltons).

Supplied in: 10 mM Tris-HCl (pH 8.0), 1 mM EDTA.

The key features of this vector are:

- Extensive set of restriction sites in polylinker, many with unique 4-base overhangs
- Blue/white selection
- Small (< 3 kb), high copy number
- Ampicillin resistance

LITMUS 28i Polylinker Region:



Preparation: LITMUS 28i is isolated from *E. coli* ER2738 by a standard plasmid purification procedure.

Note: Appropriate strains of *E. coli* containing the LITMUS 28i plasmid form blue colonies on X-gal plates; when a fragment is inserted in the polylinker, the colonies are white. Blue/white selection is best achieved by plating on a rich media (e.g. LB) supplemented with X-gal (40 µg/ml) and IPTG (0.1 mM).

Notice to Buyer/User: The Buyer/User has a non-exclusive license to use this vector for **RESEARCH PURPOSES ONLY**. * Commercial use of the LITMUS Vectors may require a license from New England Biolabs, Inc.

*Use of this vector for double-stranded RNA interference by For-Profit organizations may require a license from the Carnegie Institution of Washington. For further information, contact the Director of Administration and Finance at the Carnegie Institution of Washington at 1530 P Street, N.W., Washington D.C., 20005-1910. Tel 202-939-1118.

CERTIFICATE OF ANALYSIS