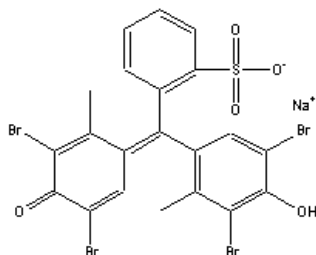


Bromocresol Green

Structure: (sodium salt)



Molecular Formula:	<i>Free Acid</i> C ₂₁ H ₁₄ Br ₄ O ₅ S	<i>Sodium Salt</i> C ₂₁ H ₁₃ Br ₄ O ₅ Na
Molecular Weight:	698.0	720
CAS #	76-60-8	62625-32-5

Synonyms: 3',3'',5',5''-Tetrabromo-m-cresolsulfonephthalein; Bromocresol Green

Physical Description: Yellow to tan powder (free acid); Reddish-brown to Greenish-black crystalline powder (sodium salt)

Solubility:

Free Acid: Soluble in water (6 mg/ml), ethanol (40 mg/ml) or methyl cellosolve (200 mg/ml)

Sodium Salt: Soluble in water (40 mg/ml) or ethanol (60 mg/ml).

Description: Tracking dye for DNA agarose electrophoresis. λ_{max} = 617 (400) nm in water. Also used as a pH indicator (3.8 to 5.4 : yellow to blue-green).

Bromocresol green binds quantitatively with human albumin¹ forming an intense blue-green complex with an absorbance maximum at 628 nm. The intensity of the color produced is directly proportional to the albumin concentration in the sample.

Availability:

Catalog Number	Description	Size
101119	Bromocresol Green	1 g 5 g 25 g
152502	Bromocresol Green, ACS Grade	1 g 5 g 25 g
152503	Bromocresol Green, sodium salt, ACS Grade	1 gm 5 gm 25 gm
195079	Bromocresol Green, sodium salt	1 gm 5 gm 10 gm 25 gm
806346 806348	Bromocresol Green, sodium salt	5 gm 10 gm

References:

1. Kessler, M.A., et al., *Anal. Biochem.*, **v. 248**, 180 (1997).
2. "Interaction of bromocresol green with different serum albumins studied by fluorescence quenching." *Biochem. Mol. Biol. Int.*, **v. 43:1**, 1-8 (1997).
3. "Albumin standards and the measurement of serum albumin with bromocresol green. 1971 [classical article]" *Clin. Chim. Acta*, **v. 258:1**, 21-30 (1997).
4. "Problems associated with plasma albumin estimation in nephrotic syndrome using the bromocresol green method." *Afr. J.*

- Med. Med. Sci.*, **v. 22:3**, 45-48 (1993).
5. "Spectrophotometric determination of molsidomine in pharmaceutical formulations using bromocresol green." *J. Pharm. Biomed. Anal.*, **v. 11:3**, 247-249 (1993).
 6. "Bromocresol green assay is nonspecific for rat plasma albumin." *Am. J. Physiol.*, **v. 262:1 Pt. 2**, H299-H302 (1992).
 7. "Multilayer-film bromocresol green method for albumin measurement significantly inaccurate when albumin/globulin ratio is less than 0.8 [letter]." *Clin. Chem.*, **v. 37:5**, 766-768 (1991).
 8. "Spectrophotometric determination of tilidine using bromocresol green and bromophenol blue." *Acta Pharm. Hung.*, **v. 60:5-6**, 179-181 (1990).
 9. "Spectrophotometric determination of clonidine in dosage forms using bromocresol green." *Farmaco*, **v. 45:3**, 381-383 (1990).
 10. "Serum albumin by dye-binding: bromocresol green or bromocresol purple? The case for conservatism." *Ann. Clin. Biochem.*, **v. 25 (pt 4)**, 417-421 (1988).
 11. "Massive overestimation of albumin in analbuminemic rat serum by bromocresol green." *Clin. Chem.*, **v. 33:11**, 2121 (1987).
 12. "Interference by an IgM paraprotein in the bromocresol green method for determination of serum albumin." *Clin. Chem.*, **v. 33:6**, 1075-1076 (1987).
 13. "[Binding capacity of albumin with bromocresol green in a group of women of fertile age]." *Quad. Sclavo. Diagn.*, **v. 21:3**, 354-359 (1985).
 14. "Automated stopped-flow analyser in clinical chemistry: determination of albumin with bromocresol green and purple." *Clin. Chim. Acta*, **v. 149:2-3**, 225-235 (1985).
 15. "Albumin analysis in serum of haemodialysis patients: discrepancies between bromocresol purple, bromocresol green and electroimmunoassay." *Ann. Clin. Biochem.*, **v. 22 (pt 3)**, 304-309 (1985).
 16. "Underestimation of albumin content by bromocresol green, induced by drug displacers and uremia." *Int. J. Clin. Pharmacol. Ther. Toxicol.*, **v. 23:2**, 76-78 (1985).
 17. "A study of the interaction between bromocresol green dye and bovine, ovine and equine serum globulins." *Vet. Res. Commun.*, **v. 8:1**, 25-32 (1984).
 18. "[Effect of dextrans, amino acids, lipids, bilirubin, hemoglobin, penicillin, heparin and EDTA on the determination of serum albumins using bromocresol green]." *Z. Med. Lab. Diagn.*, **v. 24:4**, 220-224 (1983).
 19. "Influence of plasma protein on the inhibitory effects of indocyanine green and bromocresol green on pulmonary prostaglandin E1 extraction." *Br. J. Pharmacol.*, **v. 81:3**, 449-455 (1984).
 20. "Analyte and matrix problems in the calibration and quality assessment of the bromocresol green method for albumin in serum." *J. Clin. Chem. Clin. Biochem.*, **v. 22:4**, 305-307 (1984).
 21. "Multilayer-film bromocresol green method for albumin measurement compared with three others [letter]" *Clin. Chem.*, **v. 30:4**, 581-582 (1984).
 22. "Serum albumin values from healthy cattle, sheep and horses determined by the immediate bromocresol green reaction and by agarose gel electrophoresis." *Res. Vet. Sci.*, **v. 35:1**, 58-60 (1983).
 23. "Spectrophotometric promethazine hydrochloride determination using bromocresol green." *J. Pharm. Sci.*, **v. 72:6**, 704-705 (1983).
 24. "Albumin I.M.V.S.: a variant detected by a bromocresol green dye binding method." *Clin. Chim. Acta*, **v. 130:1**, 11-23 (1983).
 25. "[Atrophic fundic gastritis unrecognized in gastroscopy: detection by local deposition of bromocresol green and pH-metry of the mucous lumen.]" *Gastroenterol. Clin. Biol.*, **v. 7:1**, 35-38 (1983).
 26. "[Determination of serum albumin concentration in pigs using bromocresol green.]" *Vet. Med. (Praha)*, **v. 26:8**, 481-489 (1981).
 27. "Bromocresol green dextrose broth for the presumptive identification of group B streptococci." *Am. J. Med. Technol.*, **v. 47:1**, 35-37 (1981).
 28. "Improved continuous-flow determination of albumin with bromocresol green [letter]." *Clin. Chem.*, **v. 28:6**, 1408-1409 (1982).
 29. "Albumin by bromocresol green -- a case of laboratory conservatism [letter]." *Clin. Chem.*, **v. 28:6**, 1407-1408 (1982).
 30. "[Selective, time dependent accumulation of the triphenylmethane dyes bromophenol blue, bromocresol green and iodophenol blue in mouse tumors.]" *Z. Exp. Chir.*, **v. 14:6**, 325-335 (1981).
 31. "Optimizing determination of plasma albumin by the bromocresol green dye-binding method." *Clin. Chem.*, **v. 27:1**, 144-146 (1981).
 32. "Comparison of manual methods of determination of albumin in human cerebrospinal fluid by the bromocresol green and immuno-precipitation methods." *Clin. Biochem.*, **v. 13:2**, 78-80 (1980).
 33. "Automated multiple flow-injection analysis in clinical chemistry: determination of albumin with bromocresol green." *Clin. Chem.*, **v. 26:2**, 331-334 (1980).
 34. *Merck Index*, **12th Ed.**, No 1407