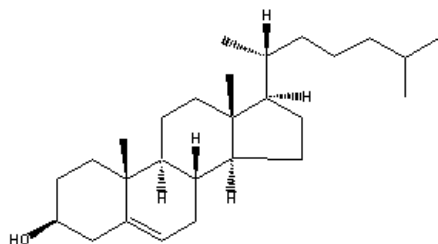


Catalog Number: 101282, 101380, 101381, 194636

Cholesterol

Structure:



Molecular Formula: C₂₇H₄₆O

Molecular Weight: 386.67

CAS # : 57-88-5

Synonyms: 5-Cholesten-3beta-ol; 3beta-Hydroxy-5-cholestene

Physical Description: Fine white powder

Source: Wool grease

Solubility: Soluble in chloroform (40 mg/ml), oils, fats, ether, pyridine, benzene, petr ether; slightly soluble in alcohol, more so in hot alcohol; practically insoluble in water

Description: Principal sterol of the higher animals.¹ Found in all body tissues.¹ Main constituent of gallstones¹ and all biological membranes. Approximately 25% of total brain lipid is cholesterol.

Availability:

Catalog Number	Description	Size
101382	Cholesterol	1 g 5 g 25 g 100 g
194636	Cholesterol, cell culture reagent	1 g 5 g 25 g 100 g
101381	Cholesterol C.P. Purity not less than 99%	10 g 25 g 100 g
101380	Cholesterol U.S.P. grade	25 g 100 g 500 g 1 kg 5 kg

Reference:

1. Merck Index, 13th Ed., No. 2221.