

PCR Tube Strips and Cap Strips

Instructions for use

eppendorf

1 Product description

PCR Tube Strips are thin-walled polypropylene disposable tubes. Cap Strips are tube lids for PCR Tube Strips and for PCR Plates.

Both consumables are designated for use in routine, research and training labs in the bioscience, industrial and chemical fields. They are only to be used by trained specialists.



The vapor volume above the liquid is reduced by combining *real-time* PCR Tube Strips and Masterclear Cap Strips. The system is therefore suitable for "low volume" PCR applications. Because of the construction of the Cap Strip the maximum filling volume of the tubes is reduced from nominal 150 μL to 80 μL .

2 Safety



WARNING! Damage to health due to toxic, radioactive or aggressive chemicals and infectious liquids and pathogenic germs.

- ▶ Observe the national regulations for handling these substances, the biological security level of your laboratory, the material safety data sheets and the manufacturer's application notes.
- ▶ Wear your personal protective equipment (PPE).



WARNING! Damage to health due escaping substances.

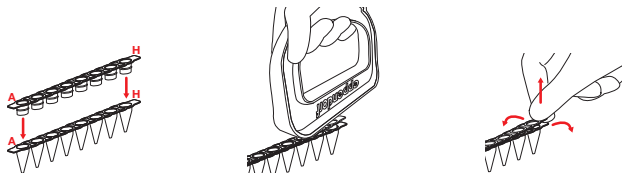
In exceptional cases (e.g. high vapor pressure of the reagents) the tube lid may burst open at increased temperatures, especially when the lid is not properly sealed or the lip seal is damaged.

- ▶ Only use undamaged and visibly perfect tubes.
- ▶ Seal the tubes correctly. Do not damage the seal lip.
- ▶ Observe the maximum filling volume. When opening the tubes, liquid at the lid may splash out.
- ▶ Prevent micro test tubes from tipping over: store in suitable micro test tube racks.
- ▶ Seal the PCR Tubes prior to centrifugation. Pay attention to the operating manuals of the device when operating centrifuges or other devices.
- ▶ Make adequate safety arrangements for the transport or storage outside of the laboratory to prevent materials escaping the tubes.

- ▶ Avoid contamination by taking adequate precautions after opening the bag of PCR clean tubes.
- ▶ Dispose reagents or micro test tubes contaminated by reagents and clean and disinfect used materials according to the regulations by the laboratory.

3 Application

Example: *real-time* PCR Tubes and Masterclear Cap Strips.



1. Use gloves.
2. Place the Cap Strips with the optical surface downwards into the tube strip or the 96 PCR plate. To do this, use the alignment with the markings A and H.
3. Press the Cap Strips firmly onto the tubes.
For assistance use the accompanying tools. With the flat side the lids can be selectively pressed onto the tube (see Fig.).
4. Check the right seating of the Cap Strips on the tube strips or the 96 PCR plates as usual.
5. Because of the tight seal it is more difficult to open the Masterclear Cap Strips. Therefore, move the lid strips sideways when pulling off after the PCR run. Thus, lid after lid can be loosened in the well and taken off afterwards.

4 Technical data

Material	Polypropylene, autoclavable (121 °C, 20 min) in open state.
Eppendorf PCR clean	Certified free of RNase, DNase, human DNA and PCR inhibitors*.
Centrifugability	Can be centrifuged up to 10,000 x g in the 45° fixed-angle rotor. Test conditions: 4 °C, 30 min, diluted saline solution with a density of 1.2 g/mL. PCR Tubes are not suitable for centrifugation of organic solvents. In case of doubt please contact Eppendorf.
Storage	Protect from direct sunlight and UV-light. Store dry at room temperature.
Operational temperature	-80 °C to +100 °C, autoclavable at 121 °C.

* Certificates or test procedures and further information on request.

5 Ordering information

Order No. (International)	Order No. (North America)	Description
0030 132.882	951022102	real-time PCR Tube Strips 0.1 mL, without caps, 10 x 12 strips
0030 124.804	0030124804	PCR Tube Strips 0,1 mL, without caps, 10 x 12 strips
0030 132.874	951022089	Masterclear Cap Strips 10 x 12 strips
0030 124.839 0030 124.847	0030124839 0030124847	Cap Strips domed, 10 x 12 strips flat, 10 x 12 strips
0030 132.890	951022109	real-time PCR Tube Strips and Masterclear Cap Strips 10 x 12 strips each
0030 124.812	0030124812	PCR Tube Strips and Cap Strips, domed 10 x 12 strips each
0030 124.820	0030124820	PCR Tube Strips and Cap Strips, flat 10 x 12 strips each
0030 124.545	0030124545	PCR Rack 10 pcs.

eppendorf
In touch with life

Your local distributor: www.eppendorf.com/worldwide

Eppendorf AG · 22331 Hamburg · Germany · Tel: +49 40 538 01-0 · Fax: +49 40 538 01-556
E-Mail: eppendorf@eppendorf.com

Eppendorf North America, Inc. · One Cantiague Road · P.O. Box 1019
Westbury, N.Y. 11590-0207 · USA · Tel: +1 516 334 7500 · Toll free phone: +1 800 645 3050
Fax: +1 516 334 7506 · E-Mail: info@eppendorf.com