

High DNA Mass Ladder

Cat. No. 10496-016

Size: 200 μ l; 4 μ l per application

Store at -20°C.

Description:

The High DNA Mass Ladder is composed of an equimolar mixture of six DNA fragments of 10000, 6000, 4000, 3000, 2000 and 1000 bp. Electrophoresis of 4 μ l of the High DNA Mass Ladder results in bands containing 200, 120, 80, 60, 40, and 20 ng of DNA, respectively.

Storage Buffer:

10 mM Tris-HCl (pH 7.5)

1 mM EDTA

Recommended Procedure:

Mix four volumes of High DNA Mass Ladder with one volume of gel loading buffer (*e.g.*, containing glycerol for density and bromophenol blue as a tracking dye). Apply an appropriate volume of ladder (see table) to gel loading dye to estimate the mass of unknown DNA samples. For reliable comparison of band intensities, the loading volume and buffer of the High DNA Mass Ladder and the experimental sample should be the same. Smaller volumes routinely give sharper bands. Do not heat the ladder before loading.

NOTE: The closer the size of the sample band relative to the band of comparable intensity in the High DNA Mass Ladder, the more accurate the mass estimation will be.

Quality Control:

Agarose gel analysis shows that all bands (10000, 6000, 4000, 3000, 2000, 1000 bp) are clearly distinguishable. Sharpness and relative intensity of the bands and the absence of background are evaluated relative to a control lot by agarose gel analysis.

Fig. 1 bp

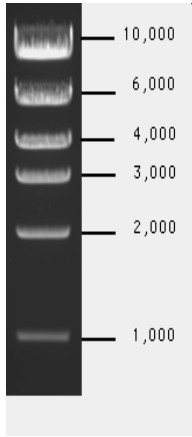


Fig. 1 High DNA Mass Ladder, 4 μ l/ application, 0.8% agarose gel, stained with ethidium bromide.

Table. Amount of DNA (ng) in each band

Fragment size	High DNA Mass Ladder (μ l)		
	2 μ l	4 μ l	8 μ l
10000 bp	100 ng	200 ng	400 ng
6000 bp	60 ng	120 ng	240 ng
4000 bp	40 ng	80 ng	160 ng
3000 bp	30 ng	60 ng	120 ng
2000 bp	20 ng	40 ng	80 ng
1000 bp	10 ng	20 ng	40 ng

If you have difficulty reading the text below, please see Limited Use Label License No. 40 in the most recent Invitrogen Corporation catalog.

Limited Use Label License No. 40: Low DNA Mass Ladder, High DNA Mass Ladder

This product is the subject of U.S. Patent No. 5,834,201 owned by Invitrogen Corporation. The purchase of this product conveys to the buyer the non-transferable right to use the purchased amount of the product and components of the product in research conducted by the buyer (whether the buyer is an academic or for-profit entity). The buyer cannot sell or otherwise transfer (a) this product (b) its components or (c) materials made using this product or its components to a third party or otherwise use this product or its components or materials made using this product or its components for commercial purposes. The buyer may transfer information or materials made through the use of this product to a scientific collaborator, provided that such transfer is not for the commercial purposes of the buyer, and that such collaborator agrees in writing (a) to not transfer such materials to any third party, and (b) to use such transferred materials and/or information solely for research and not for commercial purposes. Commercial purposes means any activity by a party for consideration and may include, but is not limited to: (1) use of the product or its components in manufacturing; (2) use of the product or its components to provide a service, information, or data; (3) use of the product or its components for therapeutic, diagnostic or prophylactic purposes; or (4) resale of the product or its components, whether or not such product or its components are resold for use in research. Invitrogen Corporation will not assert a claim against the buyer of infringement of the above patent based upon the manufacture, use or sale of a therapeutic, clinical diagnostic, vaccine or prophylactic product developed in research by the buyer in which this product or its components was employed, provided that neither this product nor any of its components was used in the manufacture of such product. If the purchaser is not willing to accept the limitations of this limited use statement, Invitrogen is willing to accept return of the products with a full refund. For information on purchasing a license to this product for purposes other than research, contact Licensing Department, Invitrogen Corporation, 1600 Faraday Avenue, Carlsbad, California 92008. Phone (760) 603-7200. Fax (760) 602-6500.

©2002 Invitrogen Corporation. All rights reserved.

Doc. Rev.: 031402

Cat. No. 10496-016

This product is distributed for laboratory research only. CAUTION: Not for diagnostic use. The safety and efficacy of this product in diagnostic or other clinical uses has not been established.

For technical questions about this product, call the Invitrogen Tech-Line™ U.S.A. 800 955 6288