

CellTrace™ CFSE Cell Proliferation Kit (C34554)

Quick Facts

Storage upon receipt:

- $\leq -20^{\circ}\text{C}$
- Desiccate
- Protect from light

Molecular weight: 557.47

Ex/Em: 492/517 nm

Introduction

The CellTrace™ CFSE Cell Proliferation Kit provides a versatile and well-retained cell-tracing reagent in a convenient and easy-to-use form. The kit contains carboxyfluorescein diacetate, succinimidyl ester (Figure 1), often called CFSE, in ten single-use vials. Small-scale experiments can be performed without preparing excess quantities of perishable CFSE stock solution. For additional convenience, we include high-quality DMSO (dimethylsulfoxide) and a detailed protocol.

CFSE passively diffuses into cells. It is colorless and non-fluorescent until the acetate groups are cleaved by intracellular esterases to yield highly fluorescent carboxyfluorescein succinimidyl ester. The succinimidyl ester group reacts with intracellular amines, forming fluorescent conjugates that are well retained and can be fixed with aldehyde fixatives. Excess unconjugated reagent and by-products passively diffuse to the extracellular medium, where they can be washed away.

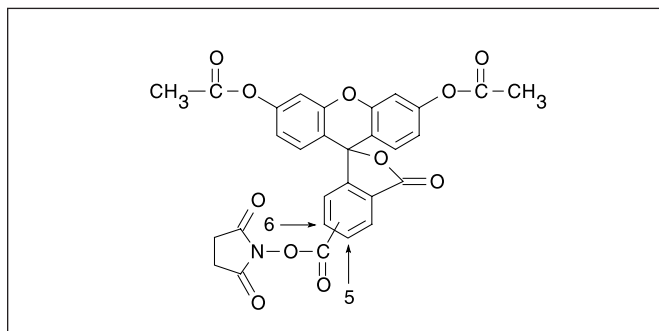


Figure 1. Structure of carboxyfluorescein diacetate, succinimidyl ester (CFSE). MW = 557.

The dye-protein adducts that form in labeled cells are retained by the cells throughout development and meiosis, and can be used for *in vivo* tracing.¹ The label is inherited by daughter cells after either cell division (Figure 2) or cell fusion, and is not transferred to adjacent cells in a population.²⁻⁴ Lymphocytes labeled with CFSE have been detected up to eight weeks after injection into mice in lymphocyte-migration studies,⁵ and viable hepatocytes that were similarly labeled were easily located by fluorescence microscopy even 20 days after intrahepatic transplantation.⁶

Materials

Kit Contents

- **CellTrace™ CFSE** (Component A), 10 vials, each containing 50 μg of lyophilized powder
- **DMSO** (Component B), 1 vial containing 0.5 mL of high-quality dimethylsulfoxide

Storage and Handling

Upon receipt, components should be stored desiccated at $\leq -20^{\circ}\text{C}$ until required for use. **AVOID REPEATED FREEZING AND THAWING.** Before opening the vial, allow the product to warm to room temperature. When stored properly, both the DMSO and solid CFSE should be stable for at least six months. Solutions of the reagent should be used promptly.

Spectral Characteristics

The approximate excitation and emission peaks of this product after hydrolysis are 492 nm and 517 nm, respectively. Cells labeled with CellTrace™ CFSE can be visualized by fluorescence microscopy using standard fluorescein filter sets or analyzed by flow cytometry in an instrument equipped with a 488 nm excitation source.

Experimental Protocol

For staining cells prior to flow cytometric analysis of cell proliferation or cell division, the protocol below is appropriate. More information on this procedure can be found in reference 7. Our suggested initial conditions may require modifications because of differences in cell types and culture conditions. For researchers who wish to image the stained cells using fluorescence microscopy, we have included alternate labeling protocols for that type of analysis. The concentration of probe for optimal staining will vary depending upon the application; we recommend testing at least a tenfold range of concentrations. In general, long-term staining (more than about three days) or the use of rapidly dividing

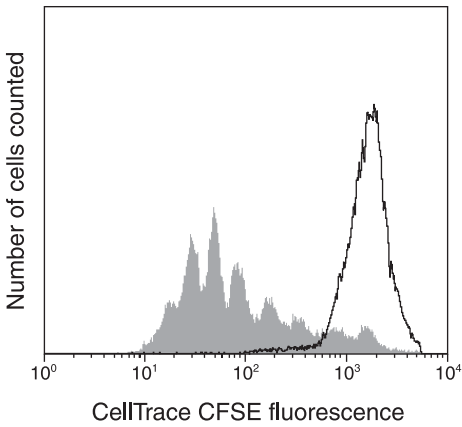


Figure 2. Human peripheral blood lymphocytes were harvested and stained with CellTrace™ CFSE on Day 0. A portion of the population was arrested at the parent generation using mitomycin C (black peak). The rest of the sample was stimulated with phytohemagglutinin and allowed to proliferate for 5 days. Solid gray peaks represent successive generations.

cells will require 5–10 μM dye. Less dye (0.5–5 μM) is needed for shorter experiments, such as viability assays. Microscopy applications may require up to 25 μM CFSE. To maintain normal cellular physiology and reduce potential artifacts from overloading, the concentration of dye should be kept as low as feasible.

Note: The CellTrace™ CFSE dye reacts with amine groups and should not be used with amine-containing buffers or lysine-coated slides.

Reagent Preparation

Prepare a 5 mM CellTrace™ CFSE stock solution immediately prior to use by dissolving the contents of one vial (Component A) in 18 μL of the DMSO provided (Component B).

Labeling Cells for Analysis in Flow Cytometry

This method has been useful in determining cell division in B and T cells.

Before you begin, have the following:

- cells of interest as a single-cell suspension
- PBS/0.1% BSA
- 5 mM stock solution of CFSE probe (see *Reagent Preparation*)
- culture media for cells of interest
- flow cytometer with 488 nm argon-ion laser

1.1 Resuspend cells of interest in prewarmed PBS/0.1% BSA at a final concentration of 1×10^6 cells/mL.

Note: To ensure uniform labeling, it is important that you begin with a single-cell suspension (no aggregates). The quantity of cells for *in vitro* labeling experiments is usually 10^5 – 10^6 , depending upon how long after labeling the cells will be allowed to grow. For adoptive transfers, label from 1 – 5×10^7 cells.

1.2 For most applications add 2 μL of 5 mM stock CFSE solution per milliliter of cells for a final working concentration of 10 μM . Note, however, that a titration of reagent may be necessary to determine the optimal working concentration of CFSE in some applications. For this purpose a portion of the CFSE stock solution may be diluted further in DMSO prior to use. Working concentrations will likely be in the range of 0.5–25 μM .

1.3 Incubate dye at 37°C for 10 min.

1.4 Quench the staining by the addition of 5 volumes of ice-cold culture media to the cells.

1.5 Incubate 5 min on ice.

1.6 Pellet cells by centrifugation.

1.7 Wash the cells by resuspending the pellet in fresh media. Pellet and resuspend the cells in fresh media a further two times for a total of three washes.

1.8 Set up *in vitro* cell cultures under appropriate conditions or adoptively transfer cells.⁷

1.9 Harvest cells and stain for other markers if appropriate.

1.10 Analyze using a flow cytometer with 488 nm excitation and emission filters appropriate for fluorescein.

Alternate Method to Label Cells in Suspension

2.1 Centrifuge to obtain a cell pellet and aspirate the supernatant.

2.2 Dilute the 5 mM CFSE stock solution in phosphate-buffered saline (PBS) or other suitable buffer to the desired working concentration (0.5–25 μM).

2.3 Resuspend the cells gently in prewarmed (37°C) PBS containing the probe (prepared in previous step).

2.4 Incubate the cells for 15 min at 37°C.

2.5 Re-pellet the cells by centrifugation and resuspend in fresh prewarmed medium.

2.6 Incubate the cells for another 30 min to ensure complete modification of the probe and then wash the cells again.

Alternate Method to Label Adherent Cells

3.1 Grow cells to desired density on coverslips inside a petri dish filled with the appropriate culture medium.

3.2 Dilute the 5 mM CFSE stock solution in phosphate-buffered saline (PBS) or other suitable buffer to the desired working concentration (0.5–25 μM).

3.3 Remove the medium from the dish and add prewarmed (37°C) PBS containing the probe (prepared in previous step).

3.4 Incubate the cells for 15 min at 37°C.

3.5 Replace the loading solution with fresh, prewarmed medium and incubate the cultures for another 30 min at 37°C. During this time, CFSE will undergo acetate hydrolysis.

Optional Fixation and Permeabilization

4.1 Before fixation, the cells must be washed with PBS or other suitable buffer.

4.2 Standard fixation protocols using aldehyde-containing fixatives should effectively crosslink the amines of the protein–probe conjugate. Typically, cells are fixed for 15 min at room temperature using 3.7% formaldehyde.

4.3 After fixation, the cells should be rinsed in PBS.

4.4 If needed, cells can be permeabilized by any appropriate protocol (for example, 10 minute incubation in ice-cold acetone). Following permeabilization, the cells should be rinsed in PBS. Permeabilization is required, for example, if the cells are to be subsequently labeled with an antibody.

References

1. J Cell Biol 101, 610 (1985); 2. J Cell Biol 103, 2649 (1986); 3. J Immunol Methods 171, 131 (1994); 4. J Exp Med 184, 277 (1996); 5. J Immunol Methods 133, 87 (1990); 6. Transplant Proc 24, 2820 (1992); 7. *Current Protocols in Cytometry*, J. P. Robinson, Ed., (1998) pp 9.11.1-9.11.9.

Product List *Current prices may be obtained from our website or from our Customer Service Department.*

Cat #	Product Name	Unit Size
C34554	CellTrace™ CFSE Cell Proliferation Kit *for flow cytometry*	1 kit

Contact Information

Further information on Molecular Probes products, including product bibliographies, is available from your local distributor or directly from Molecular Probes. Customers in Europe, Africa and the Middle East should contact our office in Paisley, United Kingdom. All others should contact our Technical Service Department in Eugene, Oregon.

Please visit our website — probes.invitrogen.com — for the most up-to-date information.

Molecular Probes, Inc.

29851 Willow Creek Road, Eugene, OR 97402
Phone: (541) 465-8300 • Fax: (541) 335-0504

Customer Service: 6:00 am to 4:30 pm (Pacific Time)

Phone: (541) 335-0338 • Fax: (541) 335-0305 • probesorder@invitrogen.com

Toll-Free Ordering for USA:

Order Phone: (800) 438-2209 • Order Fax: (800) 438-0228

Technical Service: 8:00 am to 4:00 pm (Pacific Time)

Phone: (541) 335-0353 • Toll-Free (800) 438-2209
Fax: (541) 335-0238 • probestech@invitrogen.com

Invitrogen European Headquarters

Invitrogen, Ltd.
3 Fountain Drive
Inchinnan Business Park
Paisley PA4 9RF, UK
Phone: +44 (0) 141 814 6100 • Fax: +44 (0) 141 814 6260
Email: euroinfo@invitrogen.com
Technical Services: eurotech@invitrogen.com

Molecular Probes products are high-quality reagents and materials intended for research purposes only. These products must be used by, or directly under the supervision of, a technically qualified individual experienced in handling potentially hazardous chemicals. Please read the Material Safety Data Sheet provided for each product; other regulatory considerations may apply.

Limited Use Label License

For research use only. Not intended for any animal or human therapeutic or diagnostic use. The purchase of this product conveys to the buyer the non-transferable right to use the purchased amount of the product and components of the product in research conducted by the buyer (whether the buyer is an academic or for-profit entity). The buyer cannot sell or otherwise transfer (a) this product (b) its components or (c) materials made using this product or its components to a third party or otherwise use this product or its components or materials made using this product or its components for Commercial Purposes. The buyer may transfer information or materials made through the use of this product to a scientific collaborator, provided that such transfer is not for any Commercial Purpose, and that such collaborator agrees in writing (a) to not transfer such materials to any third party, and (b) to use such transferred materials and/or information solely for research and not for Commercial Purposes. Commercial Purposes means any activity by a party for consideration and may include, but is not limited to: (1) use of the product or its components in manufacturing; (2) use of the product or its components to provide a service, information, or data; (3) use of the product or its components for therapeutic, diagnostic or prophylactic purposes; or (4) resale of the product or its components, whether or not such product or its components are resold for use in research. Invitrogen Corporation will not assert a claim against the buyer of infringement of the above patents based upon the manufacture, use or sale of a therapeutic, clinical diagnostic, vaccine or prophylactic product developed in research by the buyer in which this product or its components was employed, provided that neither this product nor any of its components was used in the manufacture of such product. If the purchaser is not willing to accept the limitations of this limited use statement, Invitrogen is willing to accept return of the product with a full refund. For information on purchasing a license to this product for purposes other than research, contact Molecular Probes, Inc., Business Development, 29851 Willow Creek Road, Eugene, OR 97402. Tel: (541) 465-8300. Fax: (541) 335-0504.

Several Molecular Probes products and product applications are covered by U.S. and foreign patents and patents pending. All names containing the designation ® are registered with the U.S. Patent and Trademark Office.

Copyright 2005, Molecular Probes, Inc. All rights reserved. This information is subject to change without notice.